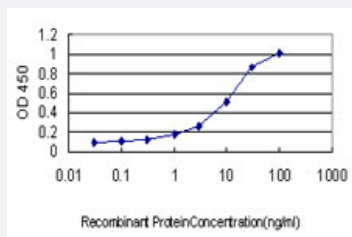


# DST monoclonal antibody (M01), clone 1B10

Catalog # H00000667-M01

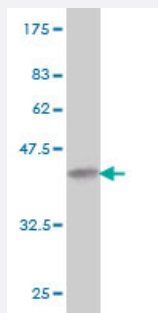
Size 100 ug

## Applications



### Sandwich ELISA (Recombinant protein)

Detection limit for recombinant GST tagged DST is approximately 0.1ng/ml as a capture antibody.



Western Blot detection against Immunogen (36.74 KDa) .

## Specification

<b>Product Description</b>	Mouse monoclonal antibody raised against a partial recombinant DST.
<b>Immunogen</b>	DST (NP_899236, 401 a.a. ~ 500 a.a) partial recombinant protein with GST tag. MW of the GST tag alone is 26 KDa.
<b>Sequence</b>	EDKLILAGNALQSDSKRLESGVQFQNEAEIAGYILECENLLRQHVIDVQILIDGKYYQADQLVQRVA KLRDEIMALRNECSSVYSKGRILTTEQTKLMIS
<b>Host</b>	Mouse
<b>Reactivity</b>	Human
<b>Isotype</b>	IgG1 Kappa

**Quality Control Testing**

Antibody Reactive Against Recombinant Protein.  
Western Blot detection against Immunogen (36.74 KDa) .

**Storage Buffer**

In 1x PBS, pH 7.4

**Storage Instruction**

Store at -20°C or lower. Aliquot to avoid repeated freezing and thawing.

## Applications

- Western Blot (Recombinant protein)

[Protocol Download](#)

- Sandwich ELISA (Recombinant protein)

Detection limit for recombinant GST tagged DST is approximately 0.1ng/ml as a capture antibody.

[Protocol Download](#)

- ELISA

## Gene Info — DST

**Entrez GeneID**

[667](#)

**GeneBank Accession#**

[NM\\_183380](#)

**Protein Accession#**

[NP\\_899236](#)

**Gene Name**

DST

**Gene Alias**

BP240, BPA, BPAG1, CATX-15, D6S1101, DKFZp564B2416, DMH, DT, FLJ46791, KIAA0465, KIAA1470, MACF2

**Gene Description**

dystonin

**Omim ID**

[113810](#)

**Gene Ontology**

[Hyperlink](#)

**Gene Summary**

This gene encodes a member of the plakin protein family of adhesion junction plaque proteins. Multiple alternatively spliced transcript variants encoding distinct isoforms have been found for this gene, but the full-length nature of some variants has not been defined. It has been known that some isoforms are expressed in neural and muscle tissue, anchoring neural intermediate filaments to the actin cytoskeleton, and some isoforms are expressed in epithelial tissue, anchoring keratin-containing intermediate filaments to hemidesmosomes. Consistent with the expression, mice defective for this gene show skin blistering and neurodegeneration. [provided by RefSeq]

**Other Designations**

OTTHUMP00000016657|OTTHUMP00000040015|bullous pemphigoid antigen 1, 230/240kDa|dystonia musculorum of mouse, human homolog of|hemidesmosomal plaque protein

**Publication Reference**

- [Dystonin/Bpag1 is a necessary endoplasmic reticulum/nuclear envelope protein in sensory neurons.](#)

Young KG, Kothary R.

Experimental Cell Research 2008 Jul; 314(15):2750.

Application: IF, Mouse, Mouse dorsal root ganglia

**Disease**

- [Tobacco Use Disorder](#)