

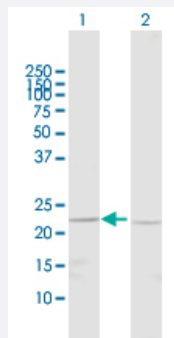
MaxPab®

BNIP1 purified MaxPab rabbit polyclonal antibody (D01P)

Catalog # H00000662-D01P

Size 100 ug

Applications



Western Blot (Transfected lysate)

Western Blot analysis of BNIP1 expression in transfected 293T cell line ([H00000662-T03](#)) by BNIP1 MaxPab polyclonal antibody.

Lane 1: BNIP1 transfected lysate(22.40 kDa).

Lane 2: Non-transfected lysate.

Specification

Product Description	Rabbit polyclonal antibody raised against a full-length human BNIP1 protein.
Immunogen	BNIP1 (NP_053581.1, 1 a.a. ~ 194 a.a) full-length human protein.
Sequence	MAAPQDVHVRICNQEVKFDLEVKALIQDIRDCSGPLSALTELNKVKKEKFQQLRHRIQDLEQLAKE QDKESKQLLLQEVENHKKQMLRKTTKESLAQTSSTITESLMGISRMMAQQVQQSEEAMQSLVT SSRTILDANEEFKSMSGTIQLGRKLITKYNRRELTDKLLIFLALRLFLATVLYVKKRLFPFL
Host	Rabbit
Reactivity	Human
Quality Control Testing	Antibody reactive against mammalian transfected lysate.
Storage Buffer	In 1x PBS, pH 7.4
Storage Instruction	Store at -20°C or lower. Aliquot to avoid repeated freezing and thawing.

Applications

- Western Blot (Transfected lysate)

Western Blot analysis of BNIP1 expression in transfected 293T cell line ([H00000662-T03](#)) by BNIP1 MaxPab polyclonal antibody.

Lane 1: BNIP1 transfected lysate(22.40 KDa).

Lane 2: Non-transfected lysate.

[Protocol Download](#)

Gene Info — BNIP1

Entrez GeneID [662](#)

GeneBank Accession# [NM_013978](#)

Protein Accession# [NP_053581.1](#)

Gene Name BNIP1

Gene Alias NIP1, SEC20, TRG-8

Gene Description BCL2/adenovirus E1B 19kDa interacting protein 1

Omim ID [603291](#)

Gene Ontology [Hyperlink](#)

Gene Summary This gene is a member of the BCL2/adenovirus E1B 19 kd-interacting protein (BNIP) family. It interacts with the E1B 19 kDa protein which is responsible for the protection of virally-induced cell death, as well as E1B 19 kDa-like sequences of BCL2, also an apoptotic protector. Alternative splicing of this gene results in four protein products with identical N- and C-termini. [provided by RefSeq]

Other Designations BCL2/adenovirus E1B 19kD interacting protein 1|BCL2/adenovirus E1B 19kD-interacting protein 1|OTTHUMP00000161079

Pathway

- [SNARE interactions in vesicular transport](#)

Disease

- [Genetic Predisposition to Disease](#)
- [Prostatic Neoplasms](#)