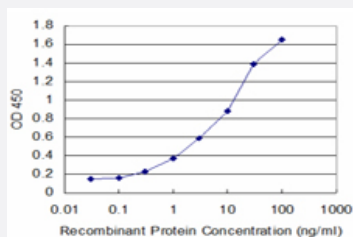


BMP5 monoclonal antibody (M84), clone 1G8

Catalog # H00000653-M84

Size 100 ug

Applications



Sandwich ELISA (Recombinant protein)

Detection limit for recombinant GST tagged BMP5 is approximately 0.3ng/ml as a capture antibody.

Specification

Product Description	Mouse monoclonal antibody raised against a partial recombinant BMP5.
Immunogen	BMP5 (NP_066551.1, 323 a.a. ~ 454 a.a) partial recombinant protein with GST tag. MW of the GST tag alone is 26 KDa.
Sequence	NQNRNKSSSHQDSSRMSSVGDYNTSEQKQACKKHELYVSFRDLGWQDWIAPEGYAAFYCDGE CSFPLNAHNMNATNHAIQTLVHLMFPDHVPKPCCAPTKLNAISVLYFDDSSNVILKKYRNMVVRSC GCH
Host	Mouse
Reactivity	Human
Isotype	IgG2a Kappa
Quality Control Testing	Antibody Reactive Against Recombinant Protein.
Storage Buffer	In 1x PBS, pH 7.4
Storage Instruction	Store at -20°C or lower. Aliquot to avoid repeated freezing and thawing.

Applications

- Sandwich ELISA (Recombinant protein)

Detection limit for recombinant GST tagged BMP5 is approximately 0.3ng/ml as a capture antibody.

[Protocol Download](#)

- ELISA

Gene Info — BMP5

Entrez GeneID [653](#)

GeneBank Accession# [NM_021073.1](#)

Protein Accession# [NP_066551.1](#)

Gene Name BMP5

Gene Alias MGC34244

Gene Description bone morphogenetic protein 5

Omim ID [112265](#)

Gene Ontology [Hyperlink](#)

Gene Summary This gene encodes a member of the bone morphogenetic protein family which is part of the transforming growth factor-beta superfamily. The superfamily includes large families of growth and differentiation factors. Bone morphogenetic proteins were originally identified by an ability of demineralized bone extract to induce endochondral osteogenesis in vivo in an extraskeletal site. These proteins are synthesized as prepropeptides, cleaved, and then processed into dimeric proteins. This protein may act as an important signaling molecule within the trabecular meshwork and optic nerve head, and may play a potential role in glaucoma pathogenesis. This gene is differentially regulated during the formation of various tumors. [provided by RefSeq]

Other Designations OTTHUMP00000016650

Pathway

- [Cytokine-cytokine receptor interaction](#)
- [Hedgehog signaling pathway](#)

- [TGF-beta signaling pathway](#)

Disease

- [Congenital Abnormalities](#)
- [Genetic Predisposition to Disease](#)
- [Obesity](#)
- [Osteoarthritis](#)
- [Ovarian Failure](#)
- [Polycystic Ovary Syndrome](#)
- [Puberty](#)
- [Thrombophilia](#)
- [Tobacco Use Disorder](#)