

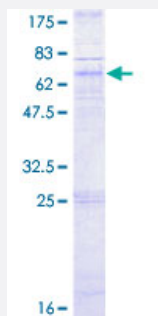
Full-Length

## CXCR5 (Human) Recombinant Protein (P01)

Catalog # H00000643-P01

Size 25 ug, 10 ug

### Applications



### Specification

#### Product Description

Human CXCR5 full-length ORF ( NP\_001707.1, 1 a.a. - 372 a.a.) recombinant protein with GST-tag at N-terminal.

#### Sequence

MNYPLTLEMDLENLEDLFWELDRDNYNDTSLVENHLC PATEGPLMASFKAVFVPVAYSLIFLLG  
VIGNVLVLVILERHRQTRSSTETFLFHLAVADLLL VFILPFAVAEGSVGWVLTGFLCKTVIALHKVNF  
YCSSL LACIAVD RYLAMHAVHAYRHRRLLSIHITCGTWLVGFLLALPEILFAKVSQGHNNSLPRC  
TFSQENQAETHAWFTSRFLYHVAGFLLPMLVMGWCYVGVVHRLRQAQRRPQRQKAVRVAILVTS  
IFFLCWSPYHMIFLDTLARLKAVDNTCKLNGSLPVAITMCEFLGLAHCCCLNPMLYTFAGVKFRSDL  
SRLLTKLGCTGPASLCQLFPSWRRSSLSESENATSLTTF

#### Host

Wheat Germ (in vitro)

#### Theoretical MW (kDa)

68.4

#### Preparation Method

[in vitro wheat germ expression system](#)

#### Purification

Glutathione Sepharose 4 Fast Flow

#### Quality Control Testing

12.5% SDS-PAGE Stained with Coomassie Blue.

#### Storage Buffer

50 mM Tris-HCl, 10 mM reduced Glutathione, pH=8.0 in the elution buffer.

#### Storage Instruction

Store at -80°C. Aliquot to avoid repeated freezing and thawing.

## Note

Best use within three months from the date of receipt of this protein.

## Applications

- Enzyme-linked Immunoabsorbent Assay
- Western Blot (Recombinant protein)
- Antibody Production
- Protein Array

## Gene Info — CXCR5

Entrez GeneID [643](#)

GeneBank Accession# [NM\\_001716.2](#)

Protein Accession# [NP\\_001707.1](#)

Gene Name CXCR5

Gene Alias BLR1, CD185, MDR15, MGC117347

Gene Description chemokine (C-X-C motif) receptor 5

Omim ID [601613](#)

Gene Ontology [Hyperlink](#)

**Gene Summary** This gene was identified as a gene specifically expressed in Burkitt's lymphoma and lymphatic tissues. The protein encoded by this gene is predicted to be a seven transmembrane G protein-coupled receptor and belongs to the CXC chemokine receptor family. BLC, a B-lymphocyte chemoattractant, was identified to be a specific ligand for this receptor. Studies of this gene and its mouse counterpart strongly suggest the essential function of this gene in B cell migration and localization within specific anatomic compartments, such as follicles in lymph nodes as well as in spleen. Two alternatively spliced variants of this gene exist. [provided by RefSeq]

**Other Designations** Burkitt lymphoma receptor 1|Burkitt lymphoma receptor 1, GTP binding protein (chemokine (C-X-C motif) receptor 5)|Burkitt lymphoma receptor 1, GTP-binding protein|C-X-C chemokine receptor type 5|monocyte-derived receptor 15

## Pathway

- [Chemokine signaling pathway](#)
- [Cytokine-cytokine receptor interaction](#)

## Disease

- [Cardiovascular Diseases](#)
- [Diabetes Mellitus](#)
- [Edema](#)
- [Genetic Predisposition to Disease](#)