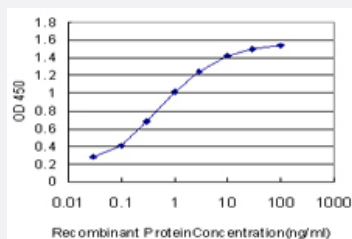


CXCR5 monoclonal antibody (M01), clone 2C1

Catalog # H00000643-M01

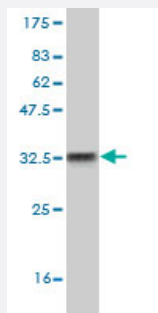
Size 100 ug

Applications



Sandwich ELISA (Recombinant protein)

Detection limit for recombinant GST tagged BLR1 is approximately 0.03ng/ml as a capture antibody.



Western Blot detection against Immunogen (32.16 KDa) .

Specification

Product Description	Mouse monoclonal antibody raised against a partial recombinant CXCR5.
Immunogen	CXCR5 (NP_001707, 1 a.a. ~ 55 a.a) partial recombinant protein with GST tag. MW of the GST tag alone is 26 KDa.
Sequence	MNYPLTLEMDLENLEDLFWELDRLDNYNDTSLVENHLCPEATGGLMASFKAVFVP
Host	Mouse
Reactivity	Human
Isotype	IgG2a Kappa

Quality Control Testing

Antibody Reactive Against Recombinant Protein.
Western Blot detection against Immunogen (32.16 KDa) .

Storage Buffer

In 1x PBS, pH 7.4

Storage Instruction

Store at -20°C or lower. Aliquot to avoid repeated freezing and thawing.

Applications

- Western Blot (Recombinant protein)

[Protocol Download](#)

- Sandwich ELISA (Recombinant protein)

Detection limit for recombinant GST tagged BLR1 is approximately 0.03ng/ml as a capture antibody.

[Protocol Download](#)

- ELISA

Gene Info — CXCR5

Entrez GeneID

[643](#)

GeneBank Accession#

[NM_001716](#)

Protein Accession#

[NP_001707](#)

Gene Name

CXCR5

Gene Alias

BLR1, CD185, MDR15, MGC117347

Gene Description

chemokine (C-X-C motif) receptor 5

Omim ID

[601613](#)

Gene Ontology

[Hyperlink](#)

Gene Summary

This gene was identified as a gene specifically expressed in Burkitt's lymphoma and lymphatic tissues. The protein encoded by this gene is predicted to be a seven transmembrane G protein-coupled receptor and belongs to the CXC chemokine receptor family. BLC, a B-lymphocyte chemoattractant, was identified to be a specific ligand for this receptor. Studies of this gene and its mouse counterpart strongly suggest the essential function of this gene in B cell migration and localization within specific anatomic compartments, such as follicles in lymph nodes as well as in spleen. Two alternatively spliced variants of this gene exist. [provided by RefSeq]

Other Designations

Burkitt lymphoma receptor 1|Burkitt lymphoma receptor 1, GTP binding protein (chemokine (C-X-C motif) receptor 5)|Burkitt lymphoma receptor 1, GTP-binding protein|C-X-C chemokine receptor type 5|monocyte-derived receptor 15

Pathway

- [Chemokine signaling pathway](#)
- [Cytokine-cytokine receptor interaction](#)

Disease

- [Cardiovascular Diseases](#)
- [Diabetes Mellitus](#)
- [Edema](#)
- [Genetic Predisposition to Disease](#)