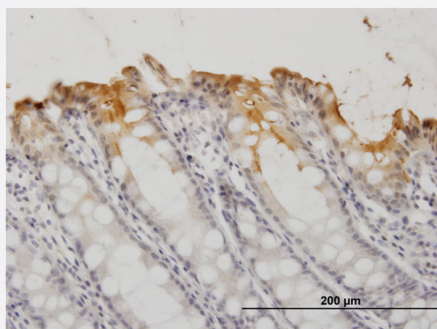


CEACAM1 monoclonal antibody (M15), clone 2F6

Catalog # H00000634-M15

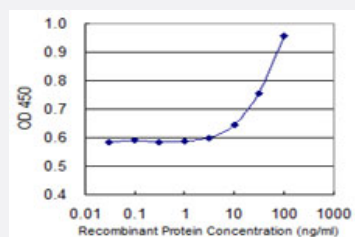
Size 100 ug

Applications



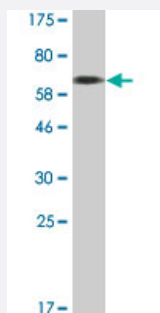
Immunohistochemistry (Formalin/PFA-fixed paraffin-embedded sections)

Immunoperoxidase of monoclonal antibody to CEACAM1 on formalin-fixed paraffin-embedded human colon. [antibody concentration 3 ug/ml]



Sandwich ELISA (Recombinant protein)

Detection limit for recombinant GST tagged CEACAM1 is 3 ng/ml as a capture antibody.



Western Blot detection against Immunogen (77 KDa) .

Specification

Product Description

Mouse monoclonal antibody raised against a full-length recombinant CEACAM1.

Immunogen	CEACAM1 (AAH14473.1, 1 a.a. ~ 468 a.a) full-length recombinant protein with GST tag. MW of the GST tag alone is 26 KDa.
Sequence	MGHLSAPLHRVRVPWQGLLLTASLLTFWNPPTTAQLTTESMPFNVAEGKEVLLL VHNLPPQQLFGY SWYKGERVDGNRQIVGYAIGTQQATPGPANSGRETYPNASLLIQNVTQNDTGFYTLQVIKSDLVNE EATGQFHVYPELPKPSISSNNSNPVEDKDAVAFTCEPETQDDTYLWWINNQLPVSPRLQLSNGN RTLTLSSVTRNDTGPYECEIQNPVSANRSDPVTNLNVTYGPDTPTISPSTDYYPGANLSLSCYAASN PPAQYSWLINGTFQQSTQELFIPNITVNNSGSYTCANNNSVTGCNRTTVKTIVTELSPVVAKPQIKA SKTTVTGDKDSVNLTCSTNDTGISIRWFFKNQSLPSSERMKLSQGNNTLSINPVKREDAGTYWCE VFNPISKNSQSDPIMLNVNYPALPQENGLSPGAIGVIGVVALVALIAVALACFLHFGKTGRTPMTH LTR
Host	Mouse
Reactivity	Human
Interspecies Antigen Sequence	Mouse (54); Rat (54)
Isotype	IgG1 Kappa
Quality Control Testing	Antibody Reactive Against Recombinant Protein. Western Blot detection against Immunogen (77 KDa) .
Storage Buffer	In 1x PBS, pH 7.4
Storage Instruction	Store at -20°C or lower. Aliquot to avoid repeated freezing and thawing.

Applications

- Western Blot (Recombinant protein)

[Protocol Download](#)

- Immunohistochemistry (Formalin/PFA-fixed paraffin-embedded sections)

Immunoperoxidase of monoclonal antibody to CEACAM1 on formalin-fixed paraffin-embedded human colon. [antibody concentration 3 ug/ml]

[Protocol Download](#)

- Sandwich ELISA (Recombinant protein)

Detection limit for recombinant GST tagged CEACAM1 is 3 ng/ml as a capture antibody.

[Protocol Download](#)

- ELISA

Gene Info — CEACAM1

Entrez GeneID	634
GeneBank Accession#	BC014473
Protein Accession#	AAH14473.1
Gene Name	CEACAM1
Gene Alias	BGP, BGP1, BGPI
Gene Description	carcinoembryonic antigen-related cell adhesion molecule 1 (biliary glycoprotein)
Omim ID	109770
Gene Ontology	Hyperlink
Gene Summary	<p>This gene encodes a member of the carcinoembryonic antigen (CEA) gene family, which belongs to the immunoglobulin superfamily. Two subgroups of the CEA family, the CEA cell adhesion molecules and the pregnancy-specific glycoproteins, are located within a 1.2 Mb cluster on the long arm of chromosome 19. Eleven pseudogenes of the CEA cell adhesion molecule subgroup are also found in the cluster. The encoded protein was originally described in bile ducts of liver as biliary glycoprotein. Subsequently, it was found to be a cell-cell adhesion molecule detected on leukocytes, epithelia, and endothelia. The encoded protein mediates cell adhesion via homophilic as well as heterophilic binding to other proteins of the subgroup. Multiple cellular activities have been attributed to the encoded protein, including roles in the differentiation and arrangement of tissue three-dimensional structure, angiogenesis, apoptosis, tumor suppression, metastasis, and the modulation of innate and adaptive immune responses. Multiple transcript variants encoding different isoforms have been reported, but the full-length nature of only two has been determined. [provided by RefSeq]</p>
Other Designations	CD66a antigen antigen CD66 biliary glycoprotein adhesion molecule carcinoembryonic antigen-related cell adhesion molecule 1

Disease

- [Body Weight](#)
- [Diabetes Mellitus](#)
- [Genetic Predisposition to Disease](#)
- [Meningococcal Infections](#)
- [Metabolic Syndrome X](#)
- [Osteoporosis](#)