

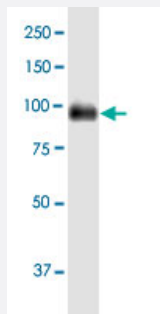
MaxPab®

# CEACAM1 purified MaxPab mouse polyclonal antibody (B02P)

Catalog # H00000634-B02P

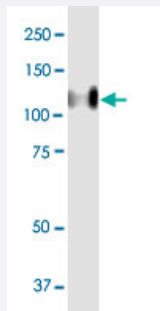
Size 50 ug

## Applications



### Western Blot (Tissue lysate)

CEACAM1 MaxPab polyclonal antibody. Western Blot analysis of CEACAM1 expression in human liver.



### Western Blot (Cell lysate)

CEACAM1 MaxPab polyclonal antibody. Western Blot analysis of CEACAM1 expression in A-431.

## Specification

<b>Product Description</b>	Mouse polyclonal antibody raised against a full-length human CEACAM1 protein.
<b>Immunogen</b>	CEACAM1 (NP_001020083.1, 1 a.a. ~ 464 a.a) full-length human protein.
<b>Sequence</b>	MGHLSAPLHRVRVPWQGLLLTASLLTFWNPPTTAQLTTESMPFNVAEGKEVLLL VHNLPQQFLGY SWYKGERVDGNRQVGYAIGTQQATPGPANSGRETYPNASLLIQNVTQNDTGFYTLQVIKSDLVNE EATGQGFHVYPELPKPSISSNNSNPVEDKDAVAFTCEPETQDTTYLWWINNQSPLVSPRLQLSNGN RTLTLTSLVTRNDTGPIECEIQNPVSANRSDPVTNLNVTYGPDTPTISPSDTYYRPGANLSLSCYAASN PPAQYSWLINGTFQQSTQELFIPNITVNNSGSYTCHANNSVTGCNRTTVKTIIVTELSPVVAKPQIKA SKTTVTGDKDSVNLTCSTNDTGISIRWFFKNQSLPSSERMKLSQGNTTSLINPVKREDAGTYWCE VFNPISKNSQSDPIMLVNLYNALPQENGLSPGAIAGIVGVVALVALIAVALACFLHFGKTGSSGPLQ

Host	Mouse
Reactivity	Human
Interspecies Antigen Sequence	Mouse (54); Rat (55)
Quality Control Testing	Antibody reactive against mammalian lysate.
Storage Buffer	In 1x PBS, pH 7.4
Storage Instruction	Store at -20°C or lower. Aliquot to avoid repeated freezing and thawing.

## Applications

- Western Blot (Tissue lysate)

CEACAM1 MaxPab polyclonal antibody. Western Blot analysis of CEACAM1 expression in human liver.

[Protocol Download](#)

- Western Blot (Cell lysate)

CEACAM1 MaxPab polyclonal antibody. Western Blot analysis of CEACAM1 expression in A-431.

[Protocol Download](#)

## Gene Info — CEACAM1

Entrez GeneID	<a href="#">634</a>
GeneBank Accession#	<a href="#">NM_001024912.1</a>
Protein Accession#	<a href="#">NP_001020083.1</a>
Gene Name	CEACAM1
Gene Alias	BGP, BGP1, BGPI
Gene Description	carcinoembryonic antigen-related cell adhesion molecule 1 (biliary glycoprotein)
Omim ID	<a href="#">109770</a>
Gene Ontology	<a href="#">Hyperlink</a>

**Gene Summary**

This gene encodes a member of the carcinoembryonic antigen (CEA) gene family, which belongs to the immunoglobulin superfamily. Two subgroups of the CEA family, the CEA cell adhesion molecules and the pregnancy-specific glycoproteins, are located within a 1.2 Mb cluster on the long arm of chromosome 19. Eleven pseudogenes of the CEA cell adhesion molecule subgroup are also found in the cluster. The encoded protein was originally described in bile ducts of liver as biliary glycoprotein. Subsequently, it was found to be a cell-cell adhesion molecule detected on leukocytes, epithelia, and endothelia. The encoded protein mediates cell adhesion via homophilic as well as heterophilic binding to other proteins of the subgroup. Multiple cellular activities have been attributed to the encoded protein, including roles in the differentiation and arrangement of tissue three-dimensional structure, angiogenesis, apoptosis, tumor suppression, metastasis, and the modulation of innate and adaptive immune responses. Multiple transcript variants encoding different isoforms have been reported, but the full-length nature of only two has been determined. [provided by RefSeq]

**Other Designations**

CD66a antigen|antigen CD66|biliary glycoprotein adhesion molecule|carcinoembryonic antigen-related cell adhesion molecule 1

**Disease**

- [Body Weight](#)
- [Diabetes Mellitus](#)
- [Genetic Predisposition to Disease](#)
- [Meningococcal Infections](#)
- [Metabolic Syndrome X](#)
- [Osteoporosis](#)