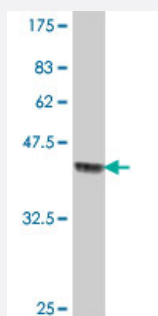


BFSP1 polyclonal antibody (A01)

Catalog # H00000631-A01

Size 50 uL

Applications



Western Blot detection against Immunogen (36.89 KDa) .

Specification

Product Description	Mouse polyclonal antibody raised against a partial recombinant BFSP1.
Immunogen	BFSP1 (NP_001186, 567 a.a. ~ 664 a.a) partial recombinant protein with GST tag.
Sequence	EESRRPCAMVTPGAEEPSIPEPPKPAADQDGAEVLGTRSRSLPEKGPPKALAYKTVEVVESIEKI STESIQTYEETAVIVETMIGTKSDKKKSGEKS
Host	Mouse
Reactivity	Human
Interspecies Antigen Sequence	Mouse (60); Rat (60)
Quality Control Testing	Antibody Reactive Against Recombinant Protein. Western Blot detection against Immunogen (36.89 KDa) .
Storage Buffer	50 % glycerol
Storage Instruction	Store at -20°C or lower. Aliquot to avoid repeated freezing and thawing.

Applications

- Western Blot (Recombinant protein)

[Protocol Download](#)

- ELISA

Gene Info — BFSP1

Entrez GeneID [631](#)

GeneBank Accession# [NM_001195](#)

Protein Accession# [NP_001186](#)

Gene Name BFSP1

Gene Alias CP115, CP94, FILENSIN, LIFL-H

Gene Description beaded filament structural protein 1, filensin

Omim ID [603307 611391](#)

Gene Ontology [Hyperlink](#)

Gene Summary More than 99% of the vertebrate ocular lens is comprised of terminally differentiated lens fiber cells. Two lens-specific intermediate filament-like proteins, CP49 (also known as phakinin) and the protein product of this gene, filensin, are expressed only after fiber cell differentiation has begun. Both proteins are found in a structurally unique cytoskeletal element that is referred to as the beaded filament (BF). Mutations in this gene are the cause of autosomal recessive cortical juvenile-onset cataract. Multiple transcript variants encoding different isoforms have been found for this gene. [provided by RefSeq]

Other Designations OTTHUMP00000030329|cytoskeletal protein, 115 KD|filensin