

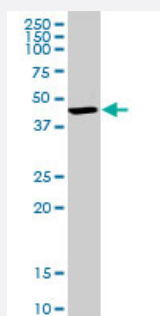
MaxPab®

BDH1 MaxPab rabbit polyclonal antibody (D01)

Catalog # H00000622-D01

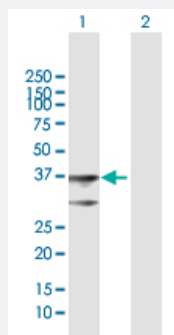
Size 100 uL

Applications



Western Blot (Cell lysate)

BDH1 MaxPab rabbit polyclonal antibody. Western Blot analysis of BDH1 expression in HeLa.

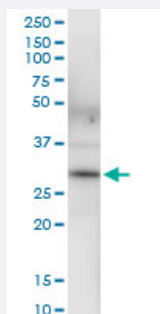


Western Blot (Transfected lysate)

Western Blot analysis of BDH1 expression in transfected 293T cell line () by BDH1 MaxPab polyclonal antibody.

Lane 1: BDH1 transfected lysate(38.2 KDa).

Lane 2: Non-transfected lysate.



Immunoprecipitation

Immunoprecipitation of BDH1 transfected lysate using anti-BDH1 MaxPab rabbit polyclonal antibody and Protein A Magnetic Bead, and immunoblotted with BDH1 purified MaxPab mouse polyclonal antibody (B01P) ([H00000622-B01P](#)).

Specification

Product Description

Rabbit polyclonal antibody raised against a full-length human BDH1 protein.

Immunogen	BDH1 (NP_004042.1, 1 a.a. ~ 343 a.a) full-length human protein.
Sequence	MLATRLSRPLSRLPGKTLACDRENGARRPLLLGSTSFPIGRRTYASAAEPVGSKAVLVTGCDSG FGFSLAKHLHSGFLVFAGCLMKDKGHDGVKELDSLNSDRLRTVQLNVCSSSEEVEKVVEMRSS LKDPEKGMWGLVNNAGISTFGEVEFTSLETYKQVAEVNLWGTVRMTKSFLPLIRRAKGRVVNISS MLGRMANPARSPYCITKFGVEAFSDCLRYEMYPLGVKVSVEPGNFIAATSLYSPESIQAIKKMW EELPEVVRKDYGKKYFDEKIAKMETYCSSGSTDTSPVIDAVTHALTATTPYTRYHPMDYYWWLRM QIMTHLPGAISDMYR
Host	Rabbit
Reactivity	Human
Interspecies Antigen Sequence	Mouse (86); Rat (87)
Quality Control Testing	Antibody reactive against mammalian transfected lysate.
Storage Buffer	No additive
Storage Instruction	Store at -20°C or lower. Aliquot to avoid repeated freezing and thawing.

Applications

- Western Blot (Cell lysate)

BDH1 MaxPab rabbit polyclonal antibody. Western Blot analysis of BDH1 expression in HeLa.

[Protocol Download](#)

- Western Blot (Transfected lysate)

Western Blot analysis of BDH1 expression in transfected 293T cell line () by BDH1 MaxPab polyclonal antibody.

Lane 1: BDH1 transfected lysate(38.2 KDa).

Lane 2: Non-transfected lysate.

[Protocol Download](#)

- Immunoprecipitation

Immunoprecipitation of BDH1 transfected lysate using anti-BDH1 MaxPab rabbit polyclonal antibody and Protein A Magnetic Bead, and immunoblotted with BDH1 purified MaxPab mouse polyclonal antibody (B01P) ([H00000622-B01P](#)).

[Protocol Download](#)

Gene Info — BDH1

Entrez GeneID	622
GeneBank Accession#	NM_004051.4
Protein Accession#	NP_004042.1
Gene Name	BDH1
Gene Alias	BDH, MGC2723, MGC4347, MGC9788, SDR9C1
Gene Description	3-hydroxybutyrate dehydrogenase, type 1
Omim ID	603063
Gene Ontology	Hyperlink
Gene Summary	<p>This gene encodes a member of the short-chain dehydrogenase/reductase gene family. The encoded protein forms a homotetrameric lipid-requiring enzyme of the mitochondrial membrane and has a specific requirement for phosphatidylcholine for optimal enzymatic activity. The encoded protein catalyzes the interconversion of acetoacetate and (R)-3-hydroxybutyrate, the two major ketone bodies produced during fatty acid catabolism. Alternatively spliced transcript variants encoding the same protein have been described. [provided by RefSeq]</p>
Other Designations	(R)-3-hydroxybutyrate dehydrogenase 3-hydroxybutyrate dehydrogenase 3-hydroxybutyrate dehydrogenase (heart, mitochondrial) D-beta-hydroxybutyrate dehydrogenase, mitochondrial short chain dehydrogenase/reductase family 9C, member 1

Pathway

- [Butanoate metabolism](#)
- [Metabolic pathways](#)
- [Synthesis and degradation of ketone bodies](#)