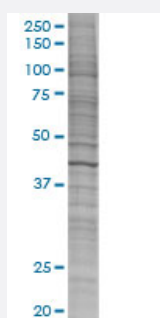


BCS1L 293T Cell Transient Overexpression Lysate(Denatured)

Catalog # H00000617-T01

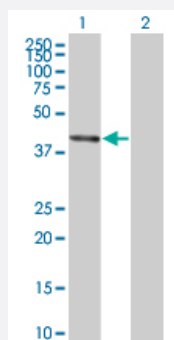
Size 100 uL

Applications



SDS-PAGE Gel

BCS1L transfected lysate.



Western Blot

Lane 1: BCS1L transfected lysate (46.2 KDa)

Lane 2: Non-transfected lysate.

Specification

Transfected Cell Line 293T

Plasmid pCMV-BCS1L full-length

Host Human

Theoretical MW (kDa) 46.2

Quality Control Testing Transient overexpression cell lysate was tested with Anti-BCS1L antibody ([H00000617-B01](#)) by Western Blots.

SDS-PAGE Gel
BCS1L transfected lysate.

Western Blot
Lane 1: BCS1L transfected lysate (46.2 KDa)
Lane 2: Non-transfected lysate.

Storage Buffer

1X Sample Buffer (50 mM Tris-HCl, 2% SDS, 10% glycerol, 300 mM 2-mercaptoethanol, 0.01% Bromophenol blue)

Storage Instruction

Store at -80°C. Aliquot to avoid repeated freezing and thawing.

Applications

- Western Blot

Gene Info — BCS1L

Entrez GeneID[617](#)**GeneBank Accession#**[NM_004328.3](#)**Protein Accession#**[P1](#)**Gene Name**

BCS1L

Gene Alias

BCS, BCS1, BJS, FLNMS, GRACILE, Hs.6719, PTD, h-BCS

Gene Description

BCS1-like (yeast)

Omim ID[124000](#) [256000](#) [262000](#) [603358](#) [603647](#)**Gene Ontology**[Hyperlink](#)**Gene Summary**

This gene encodes a homolog of the *S. cerevisiae* bcs1 protein which is involved in the assembly of complex III of the mitochondrial respiratory chain. The encoded protein does not contain a mitochondrial targeting sequence but experimental studies confirm that it is imported into mitochondria. Mutations in this gene are associated with mitochondrial complex III deficiency and the GRACILE syndrome. Two alternatively spliced transcripts encoding the same protein have been described. [provided by RefSeq]

Other Designations

BCS1-like|BCS1-like protein|OTTHUMP00000164147|mitochondrial chaperone BCS1|mitochondrial complex III assembly