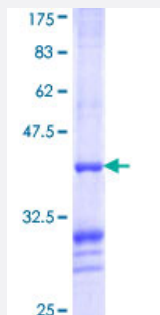


# BCS1L (Human) Recombinant Protein (Q01)

Catalog # H00000617-Q01

Size 25 ug, 10 ug

## Applications



## Specification

<b>Product Description</b>	Human BCS1L partial ORF ( NP_004319, 320 a.a. - 418 a.a.) recombinant protein with GST-tag at N-terminal.
<b>Sequence</b>	ASTEARIVFMTTNHVDRLDPALIRPGRVDLKEYVGYCSHWQLTQMFQRFYPGQAPSLAENFAEHV LRATNQISPAQVQGYFMLYKNDPVGAIHNAESLR
<b>Host</b>	Wheat Germ (in vitro)
<b>Theoretical MW (kDa)</b>	36.63
<b>Preparation Method</b>	<a href="#">in vitro wheat germ expression system</a>
<b>Purification</b>	Glutathione Sepharose 4 Fast Flow
<b>Quality Control Testing</b>	12.5% SDS-PAGE Stained with Coomassie Blue.
<b>Storage Buffer</b>	50 mM Tris-HCl, 10 mM reduced Glutathione, pH=8.0 in the elution buffer.
<b>Storage Instruction</b>	Store at -80°C. Aliquot to avoid repeated freezing and thawing.
<b>Note</b>	Best use within three months from the date of receipt of this protein.

## Applications

- Enzyme-linked Immunoabsorbent Assay
- Western Blot (Recombinant protein)
- Antibody Production
- Protein Array

## Gene Info — BCS1L

**Entrez GeneID** [617](#)

**GeneBank Accession#** [NM\\_004328](#)

**Protein Accession#** [NP\\_004319](#)

**Gene Name** BCS1L

**Gene Alias** BCS, BCS1, BJS, FLNMS, GRACILE, Hs.6719, PTD, h-BCS

**Gene Description** BCS1-like (yeast)

**Omim ID** [124000](#) [256000](#) [262000](#) [603358](#) [603647](#)

**Gene Ontology** [Hyperlink](#)

**Gene Summary** This gene encodes a homolog of the *S. cerevisiae* bcs1 protein which is involved in the assembly of complex III of the mitochondrial respiratory chain. The encoded protein does not contain a mitochondrial targeting sequence but experimental studies confirm that it is imported into mitochondria. Mutations in this gene are associated with mitochondrial complex III deficiency and the GRACILE syndrome. Two alternatively spliced transcripts encoding the same protein have been described. [provided by RefSeq]

**Other Designations** BCS1-like|BCS1-like protein|OTTHUMP00000164147|mitochondrial chaperone BCS1|mitochondrial complex III assembly