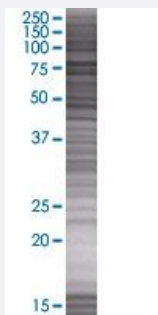


# BBS2 293T Cell Transient Overexpression Lysate(Denatured)

Catalog # H00000583-T01

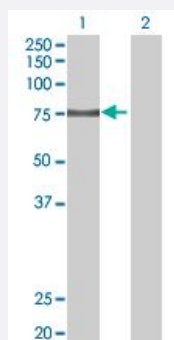
Size 100 uL

## Applications



### SDS-PAGE Gel

BBS2 transfected lysate.



### Western Blot

Lane 1: BBS2 transfected lysate ( 79.9 KDa)

Lane 2: Non-transfected lysate.

## Specification

Transfected Cell Line	293T
Plasmid	pCMV-BBS2 full-length
Host	Human
Theoretical MW (kDa)	79.9
Interspecies Antigen Sequence	Mouse (90); Rat (90)

**Quality Control Testing**

Transient overexpression cell lysate was tested with Anti-BBS2 antibody ([H00000583-B01](#)) by Western Blots.  
SDS-PAGE Gel  
BBS2 transfected lysate.  
Western Blot  
Lane 1: BBS2 transfected lysate ( 79.9 KDa)  
Lane 2: Non-transfected lysate.

**Storage Buffer**

1X Sample Buffer (50 mM Tris-HCl, 2% SDS, 10% glycerol, 300 mM 2-mercaptoethanol, 0.01% Bromophenol blue)

**Storage Instruction**

Store at -80°C. Aliquot to avoid repeated freezing and thawing.

## Applications

- Western Blot

## Gene Info — BBS2

**Entrez GeneID**[583](#)**GeneBank Accession#**[BC014140.2](#)**Protein Accession#**[AAH14140.1](#)**Gene Name**

BBS2

**Gene Alias**

BBS, MGC20703

**Gene Description**

Bardet-Biedl syndrome 2

**Omim ID**[209900 606151](#)**Gene Ontology**[Hyperlink](#)**Gene Summary**

This gene is a member of the Bardet-Biedl syndrome (BBS) gene family. Bardet-Biedl syndrome is an autosomal recessive disorder characterized by severe pigmentary retinopathy, obesity, polydactyly, renal malformation and mental retardation. The proteins encoded by BBS gene family members are structurally diverse and the similar phenotypes exhibited by mutations in BBS gene family members is likely due to their shared roles in cilia formation and function. Many BBS proteins localize to the basal bodies, ciliary axonemes, and pericentriolar regions of cells. BBS proteins may also be involved in intracellular trafficking via microtubule-related transport. The protein encoded by this gene forms a multiprotein BBSome complex with six other BBS proteins

**Other Designations**

Bardet-Biedl syndrome 2 protein

## Disease

- [Bardet-Biedl Syndrome](#)
- [Cardiovascular Diseases](#)
- [Diabetes Mellitus](#)
- [Edema](#)
- [Obesity](#)
- [Retinal Diseases](#)