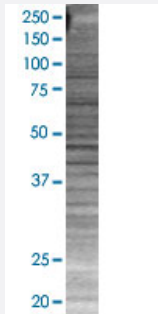


BAD 293T Cell Transient Overexpression Lysate(Denatured)

Catalog # H00000572-T01

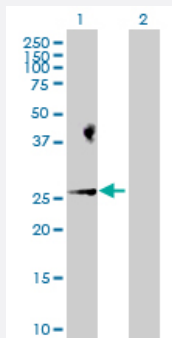
Size 100 uL

Applications



SDS-PAGE Gel

BAD transfected lysate.



Western Blot

Lane 1: BAD transfected lysate (18.40 KDa)

Lane 2: Non-transfected lysate.

Specification

Transfected Cell Line 293T

Plasmid pCMV-BAD full-length

Host Human

Theoretical MW (kDa) 18.4

Quality Control Testing Transient overexpression cell lysate was tested with Anti-BAD antibody ([H00000572-D01P](#)) by Western Blots.
 SDS-PAGE Gel
 BAD transfected lysate.
 Western Blot
 Lane 1: BAD transfected lysate (18.40 KDa)
 Lane 2: Non-transfected lysate.

Storage Buffer	1X Sample Buffer (50 mM Tris-HCl, 2% SDS, 10% glycerol, 300 mM 2-mercaptoethanol, 0.01% Bromophenol blue)
Storage Instruction	Store at -80°C. Aliquot to avoid repeated freezing and thawing.

Applications

- Western Blot

Gene Info — BAD

Entrez GeneID	572
GeneBank Accession#	NM_004322
Protein Accession#	NP_004313.1
Gene Name	BAD
Gene Alias	BBC2, BCL2L8
Gene Description	BCL2-associated agonist of cell death
Omim ID	603167
Gene Ontology	Hyperlink
Gene Summary	The protein encoded by this gene is a member of the BCL-2 family. BCL-2 family members are known to be regulators of programmed cell death. This protein positively regulates cell apoptosis by forming heterodimers with BCL-xL and BCL-2, and reversing their death repressor activity. Proapoptotic activity of this protein is regulated through its phosphorylation. Protein kinases AKT and MAP kinase, as well as protein phosphatase calcineurin were found to be involved in the regulation of this protein. Alternative splicing of this gene results in two transcript variants which encode the same isoform. [provided by RefSeq]
Other Designations	BCL-X/BCL-2 binding protein BCL2-antagonist of cell death protein BCL2-binding component 6 BCL2-binding protein

Pathway

- [Acute myeloid leukemia](#)
- [Amyotrophic lateral sclerosis \(ALS\)](#)

- [Apoptosis](#)
- [Chronic myeloid leukemia](#)
- [Colorectal cancer](#)
- [Endometrial cancer](#)
- [ErbB signaling pathway](#)
- [Focal adhesion](#)
- [Insulin signaling pathway](#)
- [Melanoma](#)
- [Neurotrophin signaling pathway](#)
- [Non-small cell lung cancer](#)
- [Pancreatic cancer](#)
- [Pathways in cancer](#)
- [Prostate cancer](#)
- [VEGF signaling pathway](#)

Disease

- [Cardiovascular Diseases](#)
- [Diabetes Mellitus](#)
- [Edema](#)
- [Genetic Predisposition to Disease](#)
- [Lymphoma](#)
- [Parkinson disease](#)
- [Thyroid Neoplasms](#)