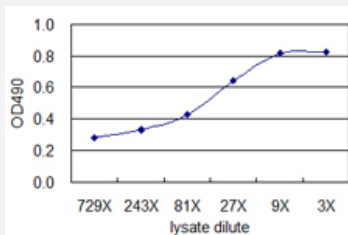


B2M (Human) Matched Antibody Pair

Catalog # H00000567-AP41

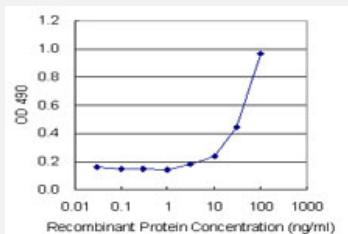
Size 1 Set

Applications



ELISA Pair (Transfected lysate)

Standard curve using 293T overexpression lysate (non-denatured) as an analyte. Sandwich ELISA detection sensitivity ranging from approximately 81x to 3x dilution of the 293T overexpression lysate (non-denatured).



Sandwich ELISA detection sensitivity ranging from 3 ng/ml to 100 ng/ml.

Specification

Product Description	This antibody pair set comes with a matched antibody pair to detect and quantify the protein level of human B2M.
Reactivity	Human
Quality Control Testing	Standard curve using recombinant protein (H00000567-P01) as an analyte. Sandwich ELISA detection sensitivity ranging from 3 ng/ml to 100 ng/ml.
Supplied Product	Antibody pair set content: 1. Capture antibody: mouse monoclonal anti-B2M (100 ug) 2. Detection antibody: biotinylated mouse monoclonal anti-B2M, IgG2b Kappa (50 ug) *Reagents are sufficient for at least 3-5 x 96 well plates using recommended protocols.

Storage Instruction

Store reagents of the antibody pair set at -20°C or lower. Please aliquot to avoid repeated freeze thaw cycle. Reagents should be returned to -20°C storage immediately after use.

Applications

- ELISA Pair (Recombinant protein)

[Protocol Download](#)

- ELISA Pair (Transfected lysate)

Standard curve using 293T overexpression lysate (non-denatured) as an analyte. Sandwich ELISA detection sensitivity ranging from approximately 81x to 3x dilution of the 293T overexpression lysate (non-denatured).

[Protocol Download](#)

Gene Info — B2M

Entrez GeneID [567](#)

Gene Name B2M

Gene Alias -

Gene Description beta-2-microglobulin

Omim ID [109700 241600](#)

Gene Ontology [Hyperlink](#)

Gene Summary This gene encodes a serum protein found in association with the major histocompatibility complex (MHC) class I heavy chain on the surface of nearly all nucleated cells. The protein has a predominantly beta-pleated sheet structure that can form amyloid fibrils in some pathological conditions. A mutation in this gene has been shown to result in hypercatabolic hypoproteinemia

Other Designations beta chain of MHC class I molecules|beta-2-microglobin

Pathway

- [Antigen processing and presentation](#)

Disease

- [Arthritis](#)
- [Cardiovascular Diseases](#)
- [Diabetes Mellitus](#)
- [Disease](#)
- [Edema](#)
- [Gastritis](#)
- [Genetic Predisposition to Disease](#)
- [Kidney Failure](#)
- [Osteoarthritis](#)
- [Parkinson disease](#)
- [Stomach Neoplasms](#)