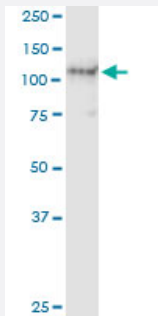


# AXL (Human) IP-WB Antibody Pair

Catalog # H00000558-PW2

Size 1 Set

## Applications



Immunoprecipitation of AXL transfected lysate using rabbit polyclonal anti-AXL and Protein A Magnetic Bead ([U0007](#)), and immunoblotted with mouse purified polyclonal anti-AXL.

## Specification

<b>Product Description</b>	This IP-WB antibody pair set comes with one antibody for immunoprecipitation and another to detect the precipitated protein in western blot.
<b>Reactivity</b>	Human
<b>Quality Control Testing</b>	Immunoprecipitation-Western Blot (IP-WB) Immunoprecipitation of AXL transfected lysate using rabbit polyclonal anti-AXL and Protein A Magnetic Bead ( <a href="#">U0007</a> ), and immunoblotted with mouse purified polyclonal anti-AXL.
<b>Supplied Product</b>	Antibody pair set content: 1. Antibody pair for IP: rabbit polyclonal anti-AXL (300 ul) 2. Antibody pair for WB: mouse purified polyclonal anti-AXL (50 ug)
<b>Storage Instruction</b>	Store reagents of the antibody pair set at -20°C or lower. Please aliquot to avoid repeated freeze thaw cycle. Reagents should be returned to -20°C storage immediately after use.

## Applications

- Immunoprecipitation-Western Blot

[Protocol Download](#)

## Gene Info — AXL

**Entrez GeneID** [558](#)**Gene Name** AXL**Gene Alias** JTK11, UFO**Gene Description** AXL receptor tyrosine kinase**Omim ID** [109135](#)**Gene Ontology** [Hyperlink](#)

**Gene Summary** The protein encoded by this gene is a member of the receptor tyrosine kinase subfamily. Although it is similar to other receptor tyrosine kinases, this protein represents a unique structure of the extracellular region that juxtaposes IgL and FNIII repeats. It transduces signals from the extracellular matrix into the cytoplasm by binding growth factors like vitamin K-dependent protein growth-arrest-specific gene 6. It is involved in the stimulation of cell proliferation and can also mediate cell aggregation by homophilic binding. Alternatively spliced transcript variants encoding different isoforms have been identified. [provided by RefSeq]

**Other Designations** AXL transforming sequence/gene|oncogene AXL

## Disease

- [Cardiovascular Diseases](#)
- [Carotid Artery Diseases](#)
- [Diabetes Mellitus](#)
- [Edema](#)
- [Genetic Predisposition to Disease](#)
- [Stroke](#)