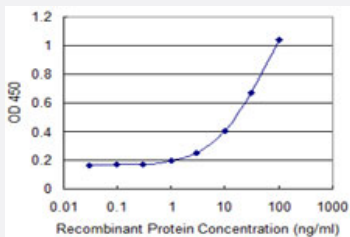


AXL monoclonal antibody (M08), clone 2C10

Catalog # H000005558-M08

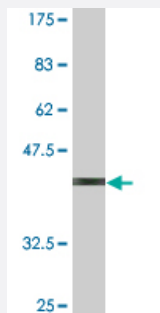
Size 100 ug

Applications



Sandwich ELISA (Recombinant protein)

Detection limit for recombinant GST tagged AXL is 0.3 ng/ml as a capture antibody.



Western Blot detection against Immunogen (36.63 KDa) .

Specification

Product Description	Mouse monoclonal antibody raised against a partial recombinant AXL.
Immunogen	AXL (NP_001690.2, 787 a.a. ~ 885 a.a) partial recombinant protein with GST tag. MW of the GST tag alone is 26 KDa.
Sequence	FTELREDLENTLKALPPAQEPDEILYVNMDEGGGYPEPPGAAGGADPPTQPDPKDSCSCLTAAE VHPAGRYVLC PSTTPSPAQPADRGSPAAPGQEDGA
Host	Mouse
Reactivity	Human
Isotype	IgG2a Kappa

Quality Control Testing

Antibody Reactive Against Recombinant Protein.
Western Blot detection against Immunogen (36.63 KDa) .

Storage Buffer

In 1x PBS, pH 7.4

Storage Instruction

Store at -20°C or lower. Aliquot to avoid repeated freezing and thawing.

Applications

- Western Blot (Recombinant protein)

[Protocol Download](#)

- Sandwich ELISA (Recombinant protein)

Detection limit for recombinant GST tagged AXL is 0.3 ng/ml as a capture antibody.

[Protocol Download](#)

- ELISA

Gene Info — AXL

Entrez GeneID

[558](#)

GeneBank Accession#

[NM_001699](#)

Protein Accession#

[NP_001690.2](#)

Gene Name

AXL

Gene Alias

JTK11, UFO

Gene Description

AXL receptor tyrosine kinase

Omim ID

[109135](#)

Gene Ontology

[Hyperlink](#)

Gene Summary

The protein encoded by this gene is a member of the receptor tyrosine kinase subfamily. Although it is similar to other receptor tyrosine kinases, this protein represents a unique structure of the extracellular region that juxtaposes IgL and FNIII repeats. It transduces signals from the extracellular matrix into the cytoplasm by binding growth factors like vitamin K-dependent protein growth-arrest-specific gene 6. It is involved in the stimulation of cell proliferation and can also mediate cell aggregation by homophilic binding. Alternatively spliced transcript variants encoding different isoforms have been identified. [provided by RefSeq]

Other Designations

AXL transforming sequence/gene|oncogene AXL

Disease

- [Cardiovascular Diseases](#)
- [Carotid Artery Diseases](#)
- [Diabetes Mellitus](#)
- [Edema](#)
- [Genetic Predisposition to Disease](#)
- [Stroke](#)