

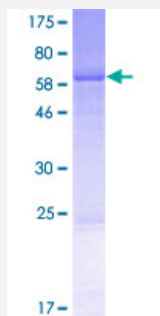
Full-Length

# AUP1 (Human) Recombinant Protein (P01)

Catalog # H00000550-P01

Size 25 ug, 10 ug

## Applications



## Specification

### Product Description

Human AUP1 full-length ORF ( NP\_853553.1, 1 a.a. - 410 a.a.) recombinant protein with GST-tag at N-terminal.

### Sequence

MELPSGPGPERLFDSHRLPGDCFLLLVLLLYAPVGFCLLVLRFLGLHVLVSCALPDSVLRRFVV  
RTMCAVLGLVARQEDSGLRDHSVRVLISNHVTPFDHNMNLLTTCSTPLLNSPPSFVCWSRGFME  
MNGRGELVESLKRFCASTRLPPTPLLLFPEEEATNGREGLLRFSSWPFSIQDVVQPLTLQVQRPL  
VSVTVSDASWVSELLWSLFVPFTVYQVRWLRPVHRQLGEANEEFALRVQQLVAKELGQTGTRLT  
PADKAEHMKRQRHRLRPQSAQSSFPSPGSPDVQLATLAQRVKEVLPHVPLGVIQRDLAKT  
GCVDLTITNLLGAVAFMPEDITKGTQSLPTASASKFPSSGPVTPQPTALTFAKSSWARQESLQE  
RKQALYEYARRRFTERRAQEAD

### Host

Wheat Germ (in vitro)

### Theoretical MW (kDa)

72.2

### Interspecies Antigen Sequence

Mouse (91); Rat (91)

### Preparation Method

[in vitro wheat germ expression system](#)

### Purification

Glutathione Sepharose 4 Fast Flow

### Quality Control Testing

12.5% SDS-PAGE Stained with Coomassie Blue.

Storage Buffer	50 mM Tris-HCl, 10 mM reduced Glutathione, pH=8.0 in the elution buffer.
Storage Instruction	Store at -80°C. Aliquot to avoid repeated freezing and thawing.
Note	Best use within three months from the date of receipt of this protein.

## Applications

- Enzyme-linked Immunoabsorbent Assay
- Western Blot (Recombinant protein)
- Antibody Production
- Protein Array

## Gene Info — AUP1

Entrez GeneID	<a href="#">550</a>
GeneBank Accession#	<a href="#">NM_181575.3</a>
Protein Accession#	<a href="#">NP_853553.1</a>
Gene Name	AUP1
Gene Alias	-
Gene Description	ancient ubiquitous protein 1
Omim ID	<a href="#">602434</a>
Gene Ontology	<a href="#">Hyperlink</a>
Gene Summary	<p>This gene encodes a protein that contains a domain with homology to the ancient conserved region of the archain 1 gene and a domain that may be involved in binding ubiquitin-conjugating enzymes. The protein encoded by this gene has been shown to bind to the conserved membrane-proximal sequence of the cytoplasmic tail of integrin alpha(IIb) subunits. These subunits play a crucial role in the integrin alpha(IIb)beta(3) inside-out signalling in platelets and megakaryocytes that leads to platelet aggregation and thrombus formation. This gene overlaps the gene for mitochondrial serine protease 25. [provided by RefSeq]</p>
Other Designations	-