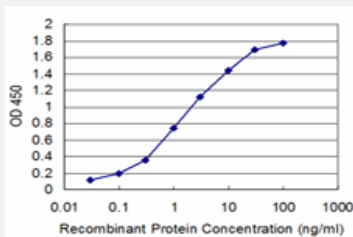


ATP7B monoclonal antibody (M03), clone 3A11

Catalog # H00000540-M03

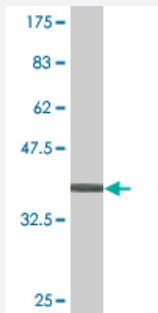
Size 100 ug

Applications



Sandwich ELISA (Recombinant protein)

Detection limit for recombinant GST tagged ATP7B is approximately 0.03ng/ml as a capture antibody.



Western Blot detection against Immunogen (36.08 KDa) .

Specification

Product Description

Mouse monoclonal antibody raised against a partial recombinant ATP7B.

Immunogen

ATP7B (NP_000044, 1372 a.a. ~ 1465 a.a) partial recombinant protein with GST tag. MW of the GST tag alone is 26 KDa.

Sequence

QLKCYKKPDLERYEAQAHGHMKPLTASQVSVHIGMDDRWRDSPRATPWDQVSVSQVLSLSSLT
SDKPSRHSAAADDDGDKWSLLLNGRDEEQYI

Host

Mouse

Reactivity

Human

Interspecies Antigen Sequence	Mouse (85); Rat (84)
Isotype	IgG1 Kappa
Quality Control Testing	Antibody Reactive Against Recombinant Protein. Western Blot detection against Immunogen (36.08 KDa) .
Storage Buffer	In 1x PBS, pH 7.4
Storage Instruction	Store at -20°C or lower. Aliquot to avoid repeated freezing and thawing.

Applications

- Western Blot (Recombinant protein)

[Protocol Download](#)

- Sandwich ELISA (Recombinant protein)

Detection limit for recombinant GST tagged ATP7B is approximately 0.03ng/ml as a capture antibody.

[Protocol Download](#)

- ELISA

Gene Info — ATP7B

Entrez GeneID	540
GeneBank Accession#	NM_000053
Protein Accession#	NP_000044
Gene Name	ATP7B
Gene Alias	PWD, WC1, WD, WND
Gene Description	ATPase, Cu ⁺⁺ transporting, beta polypeptide
Omim ID	277900 606882
Gene Ontology	Hyperlink

Gene Summary

This gene is a member of the P-type cation transport ATPase family and encodes a protein with several membrane-spanning domains, an ATPase consensus sequence, a hinge domain, a phosphorylation site, and at least 2 putative copper-binding sites. This protein functions as a monomer, exporting copper out of the cells, such as the efflux of hepatic copper into the bile. Alternate transcriptional splice variants, encoding different isoforms with distinct cellular localizations, have been characterized. Mutations in this gene have been associated with Wilson disease (WD). [provided by RefSeq]

Other Designations

ATPase, Cu(2+)- transporting, beta polypeptide|OTTHUMP00000040880|Wilson disease-associated protein|copper pump 2|copper-transporting ATPase 2

Disease

- [Chromosome Aberrations](#)
- [Genetic Predisposition to Disease](#)
- [Hepatolenticular Degeneration](#)
- [Kidney Failure](#)
- [Liver Failure](#)
- [Mental Disorders](#)
- [Motor Skills](#)