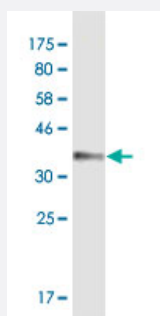


ATP2B4 monoclonal antibody (M03A), clone 2C7

Catalog # H00000493-M03A

Size 200 uL

Applications



Western Blot detection against Immunogen (35.86 KDa) .

Specification

Product Description	Mouse monoclonal antibody raised against a partial recombinant ATP2B4.
Immunogen	ATP2B4 (NP_001675, 1 a.a. ~ 92 a.a) partial recombinant protein with GST tag. MW of the GST tag alone is 26 KDa.
Sequence	MTNPSDRVLPANSMAESREGDFGCTVMELRKLME LRSDALTQINVHYGGVQNLCSRLKTSPVE GLSGNPADLEKRRQVFGHNVIPPKPKT
Host	Mouse
Reactivity	Human
Isotype	IgG IgA IgM Mix Lambda
Quality Control Testing	Antibody Reactive Against Recombinant Protein. Western Blot detection against Immunogen (35.86 KDa) .
Storage Buffer	In ascites fluid
Storage Instruction	Store at -20°C or lower. Aliquot to avoid repeated freezing and thawing.

Applications

- Western Blot (Recombinant protein)

[Protocol Download](#)

- ELISA

Gene Info — ATP2B4

Entrez GeneID [493](#)

GeneBank Accession# [NM_001684](#)

Protein Accession# [NP_001675](#)

Gene Name ATP2B4

Gene Alias ATP2B2, DKFZp686G08106, DKFZp686M088, MXRA1, PMCA4, PMCA4b, PMCA4x

Gene Description ATPase, Ca⁺⁺ transporting, plasma membrane 4

Omim ID [108732](#)

Gene Ontology [Hyperlink](#)

Gene Summary

The protein encoded by this gene belongs to the family of P-type primary ion transport ATPases characterized by the formation of an aspartyl phosphate intermediate during the reaction cycle. These enzymes remove bivalent calcium ions from eukaryotic cells against very large concentration gradients and play a critical role in intracellular calcium homeostasis. The mammalian plasma membrane calcium ATPase isoforms are encoded by at least four separate genes and the diversity of these enzymes is further increased by alternative splicing of transcripts. The expression of different isoforms and splice variants is regulated in a developmental, tissue- and cell type-specific manner, suggesting that these pumps are functionally adapted to the physiological needs of particular cells and tissues. This gene encodes the plasma membrane calcium ATPase isoform 4. Alternatively spliced transcript variants encoding different isoforms have been identified. [provided by RefSeq]

Other Designations OTTHUMP00000034088|OTTHUMP00000034089|matrix-remodelling associated 1|plasma membrane calcium ATPase 4|plasma membrane calcium pump|sarcolemmal calcium pump

Pathway

- [Calcium signaling pathway](#)

Disease

- [Genetic Predisposition to Disease](#)
- [Hypertension](#)
- [Tobacco Use Disorder](#)