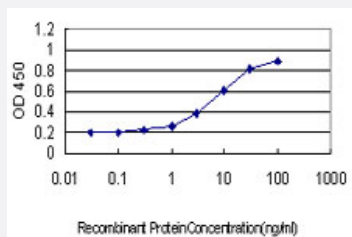


ATP2B1 monoclonal antibody (M01), clone 3E2

Catalog # H00000490-M01

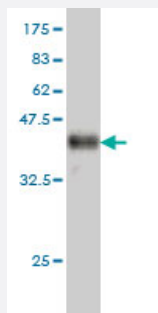
Size 100 ug

Applications



Sandwich ELISA (Recombinant protein)

Detection limit for recombinant GST tagged ATP2B1 is approximately 0.3ng/ml as a capture antibody.



Western Blot detection against Immunogen (36.41 KDa) .

Specification

Product Description

Mouse monoclonal antibody raised against a partial recombinant ATP2B1.

Immunogen

ATP2B1 (NP_001673, 1 a.a. ~ 97 a.a) partial recombinant protein with GST tag. MW of the GST tag alone is 26 KDa.

Sequence

MGDMANNSVAYSGVKNSLKEANHGDGFGITLAE LRALMELRSTDALRKIQESYGDVYGICTKLKTS
PNEGLSGNPADLERREAVFGKNFIPPKKPKT

Host

Mouse

Reactivity

Human

Interspecies Antigen Sequence	Mouse (99); Rat (100)
Isotype	IgG2a Kappa
Quality Control Testing	Antibody Reactive Against Recombinant Protein. Western Blot detection against Immunogen (36.41 KDa) .
Storage Buffer	In 1x PBS, pH 7.4
Storage Instruction	Store at -20°C or lower. Aliquot to avoid repeated freezing and thawing.

Applications

- Western Blot (Recombinant protein)

[Protocol Download](#)

- Sandwich ELISA (Recombinant protein)

Detection limit for recombinant GST tagged ATP2B1 is approximately 0.3ng/ml as a capture antibody.

[Protocol Download](#)

- ELISA

Gene Info — ATP2B1

Entrez GeneID	490
GeneBank Accession#	NM_001682
Protein Accession#	NP_001673
Gene Name	ATP2B1
Gene Alias	PMCA1, PMCA1kb
Gene Description	ATPase, Ca++ transporting, plasma membrane 1
Omim ID	108731
Gene Ontology	Hyperlink

Gene Summary

The protein encoded by this gene belongs to the family of P-type primary ion transport ATPases characterized by the formation of an aspartyl phosphate intermediate during the reaction cycle. These enzymes remove bivalent calcium ions from eukaryotic cells against very large concentration gradients and play a critical role in intracellular calcium homeostasis. The mammalian plasma membrane calcium ATPase isoforms are encoded by at least four separate genes and the diversity of these enzymes is further increased by alternative splicing of transcripts. The expression of different isoforms and splice variants is regulated in a developmental, tissue- and cell type-specific manner, suggesting that these pumps are functionally adapted to the physiological needs of particular cells and tissues. This gene encodes the plasma membrane calcium ATPase isoform 1. Alternatively spliced transcript variants encoding different isoforms have been identified. [provided by RefSeq]

Other Designations

plasma membrane calcium ATPase 1|plasma membrane calcium pump|plasma membrane calcium-ATPase

Pathway

- [Calcium signaling pathway](#)

Disease

- [Cardiovascular Diseases](#)
- [Diabetes Mellitus](#)
- [Edema](#)
- [Genetic Predisposition to Disease](#)
- [Hypertension](#)