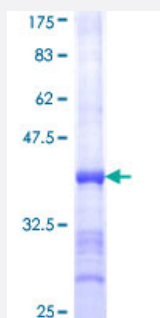


# ATP2A1 (Human) Recombinant Protein (Q01)

Catalog # H00000487-Q01

Size 25 ug, 10 ug

## Applications



## Specification

<b>Product Description</b>	Human ATP2A1 partial ORF ( NP_775293, 522 a.a. - 612 a.a.) recombinant protein with GST-tag at N-terminal.
<b>Sequence</b>	IDRCNYVRVGTTRVPLTGPVKEKIMAVIKEWGTGRDTRLCLALATRDTPPKREEMVLDDSFARLEY ETDLTFVGVVGMDDPPRKEVTGSIQ
<b>Host</b>	Wheat Germ (in vitro)
<b>Theoretical MW (kDa)</b>	35.75
<b>Preparation Method</b>	<a href="#">in vitro wheat germ expression system</a>
<b>Purification</b>	Glutathione Sepharose 4 Fast Flow
<b>Quality Control Testing</b>	12.5% SDS-PAGE Stained with Coomassie Blue.
<b>Storage Buffer</b>	50 mM Tris-HCl, 10 mM reduced Glutathione, pH=8.0 in the elution buffer.
<b>Storage Instruction</b>	Store at -80°C. Aliquot to avoid repeated freezing and thawing.
<b>Note</b>	Best use within three months from the date of receipt of this protein.

## Applications

- Enzyme-linked Immunoabsorbent Assay
- Western Blot (Recombinant protein)
- Antibody Production
- Protein Array

## Gene Info — ATP2A1

Entrez GeneID [487](#)

GeneBank Accession# [NM\\_173201](#)

Protein Accession# [NP\\_775293](#)

Gene Name ATP2A1

Gene Alias ATP2A, SERCA1

Gene Description ATPase, Ca<sup>++</sup> transporting, cardiac muscle, fast twitch 1

Omim ID [108730 601003](#)

Gene Ontology [Hyperlink](#)

**Gene Summary** This gene encodes one of the SERCA Ca<sup>(2+)</sup>-ATPases, which are intracellular pumps located in the sarcoplasmic or endoplasmic reticula of muscle cells. This enzyme catalyzes the hydrolysis of ATP coupled with the translocation of calcium from the cytosol to the sarcoplasmic reticulum lumen, and is involved in muscular excitation and contraction. Mutations in this gene cause some autosomal recessive forms of Brody disease, characterized by increasing impairment of muscular relaxation during exercise. Alternative splicing results in two transcript variants encoding different isoforms. [provided by RefSeq]

**Other Designations** ATPase, Ca<sup>++</sup> transporting, fast twitch 1|OTTHUMP00000162562|SR Ca<sup>(2+)</sup>-ATPase 1|calcium pump 1|calcium-transporting ATPase sarcoplasmic reticulum type, fast twitch skeletal muscle isoform|endoplasmic reticulum class 1/2 Ca<sup>(2+)</sup> ATPase|sarcoplasmic/endoplasm

## Pathway

- [Calcium signaling pathway](#)