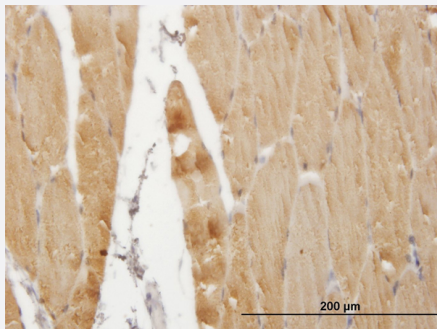


ATP2A1 monoclonal antibody (M05), clone 4B8

Catalog # H00000487-M05

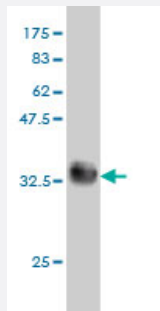
Size 100 ug

Applications



Immunohistochemistry (Formalin/PFA-fixed paraffin-embedded sections)

Immunoperoxidase of monoclonal antibody to ATP2A1 on formalin-fixed paraffin-embedded human skeletal muscle. [antibody concentration 3 ug/ml]



Western Blot detection against Immunogen (35.75 KDa) .

Specification

Product Description	Mouse monoclonal antibody raised against a partial recombinant ATP2A1.
Immunogen	ATP2A1 (NP_775293, 522 a.a. ~ 612 a.a) partial recombinant protein with GST tag. MW of the GST tag alone is 26 KDa.
Sequence	IDRCNYVRVGTTTRVPLTGVPVKEKIMAVIKEWGTGRDTRLRCLALATRDTPPKREEMVLDDSFLEYETDLTFVGVVGMLDPPRKEVTGSIQ
Host	Mouse
Reactivity	Human
Isotype	IgG3 Kappa

Quality Control Testing

Antibody Reactive Against Recombinant Protein.
Western Blot detection against Immunogen (35.75 KDa) .

Storage Buffer

In 1x PBS, pH 7.4

Storage Instruction

Store at -20°C or lower. Aliquot to avoid repeated freezing and thawing.

Applications

- Western Blot (Recombinant protein)

[Protocol Download](#)

- Immunohistochemistry (Formalin/PFA-fixed paraffin-embedded sections)

Immunoperoxidase of monoclonal antibody to ATP2A1 on formalin-fixed paraffin-embedded human skeletal muscle. [antibody concentration 3 ug/ml]

[Protocol Download](#)

- ELISA

Gene Info — ATP2A1

Entrez GeneID

[487](#)

GeneBank Accession#

[NM_173201](#)

Protein Accession#

[NP_775293](#)

Gene Name

ATP2A1

Gene Alias

ATP2A, SERCA1

Gene Description

ATPase, Ca++ transporting, cardiac muscle, fast twitch 1

Omim ID

[108730 601003](#)

Gene Ontology

[Hyperlink](#)

Gene Summary

This gene encodes one of the SERCA Ca(2+)-ATPases, which are intracellular pumps located in the sarcoplasmic or endoplasmic reticula of muscle cells. This enzyme catalyzes the hydrolysis of ATP coupled with the translocation of calcium from the cytosol to the sarcoplasmic reticulum lumen, and is involved in muscular excitation and contraction. Mutations in this gene cause some autosomal recessive forms of Brody disease, characterized by increasing impairment of muscular relaxation during exercise. Alternative splicing results in two transcript variants encoding different isoforms. [provided by RefSeq]

Other Designations

ATPase, Ca++ transporting, fast twitch 1|OTTHUMP00000162562|SR Ca(2+)-ATPase 1|calcium pump 1|calcium-transporting ATPase sarcoplasmic reticulum type, fast twitch skeletal muscle isoform|endoplasmic reticulum class 1/2 Ca(2+) ATPase|sarcoplasmic/endoplasm

Pathway

- [Calcium signaling pathway](#)