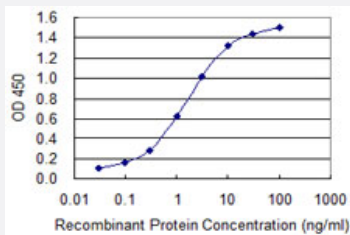


# ATP2A1 monoclonal antibody (M04), clone 5H8

Catalog # H00000487-M04

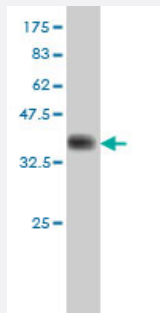
Size 100 ug

## Applications



### Sandwich ELISA (Recombinant protein)

Detection limit for recombinant GST tagged ATP2A1 is 0.03 ng/ml as a capture antibody.



Western Blot detection against Immunogen (35.75 KDa) .

## Specification

### Product Description

Mouse monoclonal antibody raised against a partial recombinant ATP2A1.

### Immunogen

ATP2A1 (NP\_775293, 522 a.a. ~ 612 a.a) partial recombinant protein with GST tag. MW of the GST tag alone is 26 KDa.

### Sequence

IDRCNYVRVGTTTRVPLTGVPVKEKIMAVIKEWGTGRDTRLCLALATRDTPPKREEMVLDDSFLEY  
ETDLTFVGVVGMLDPPRKEVTGSIQ

### Host

Mouse

### Reactivity

Human

### Isotype

IgG1 Kappa

**Quality Control Testing**

Antibody Reactive Against Recombinant Protein.  
Western Blot detection against Immunogen (35.75 KDa) .

**Storage Buffer**

In 1x PBS, pH 7.4

**Storage Instruction**

Store at -20°C or lower. Aliquot to avoid repeated freezing and thawing.

## Applications

- Western Blot (Recombinant protein)

[Protocol Download](#)

- Sandwich ELISA (Recombinant protein)

Detection limit for recombinant GST tagged ATP2A1 is 0.03 ng/ml as a capture antibody.

[Protocol Download](#)

- ELISA

## Gene Info — ATP2A1

**Entrez GeneID**

[487](#)

**GeneBank Accession#**

[NM\\_173201](#)

**Protein Accession#**

[NP\\_775293](#)

**Gene Name**

ATP2A1

**Gene Alias**

ATP2A, SERCA1

**Gene Description**

ATPase, Ca<sup>++</sup> transporting, cardiac muscle, fast twitch 1

**Omim ID**

[108730 601003](#)

**Gene Ontology**

[Hyperlink](#)

**Gene Summary**

This gene encodes one of the SERCA Ca<sup>(2+)</sup>-ATPases, which are intracellular pumps located in the sarcoplasmic or endoplasmic reticula of muscle cells. This enzyme catalyzes the hydrolysis of ATP coupled with the translocation of calcium from the cytosol to the sarcoplasmic reticulum lumen, and is involved in muscular excitation and contraction. Mutations in this gene cause some autosomal recessive forms of Brody disease, characterized by increasing impairment of muscular relaxation during exercise. Alternative splicing results in two transcript variants encoding different isoforms. [provided by RefSeq]

**Other Designations**

ATPase, Ca<sup>++</sup> transporting, fast twitch 1|OTTHUMP00000162562|SR Ca(2+)-ATPase 1|calcium pump 1|calcium-transporting ATPase sarcoplasmic reticulum type, fast twitch skeletal muscle isoform|endoplasmic reticulum class 1/2 Ca(2+) ATPase|sarcoplasmic/endoplasm

**Pathway**

- [Calcium signaling pathway](#)