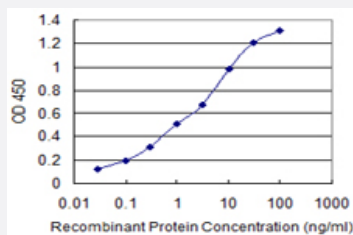


# ATP2A1 monoclonal antibody (M03), clone 2C7

Catalog # H00000487-M03

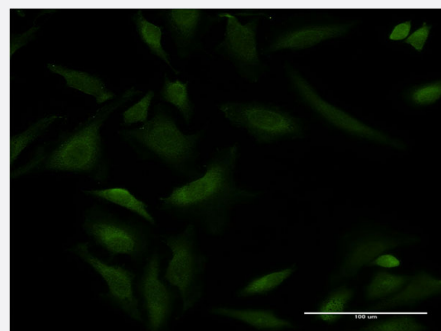
Size 100 ug

## Applications



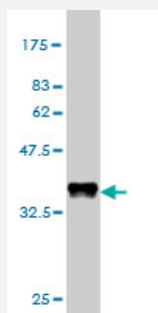
### Sandwich ELISA (Recombinant protein)

Detection limit for recombinant GST tagged ATP2A1 is 0.03 ng/ml as a capture antibody.



### Immunofluorescence

Immunofluorescence of monoclonal antibody to ATP2A1 on HeLa cell .  
[antibody concentration 10 ug/ml]



Western Blot detection against Immunogen (35.75 KDa) .

## Specification

### Product Description

Mouse monoclonal antibody raised against a partial recombinant ATP2A1.

Immunogen	ATP2A1 (NP_775293, 522 a.a. ~ 612 a.a) partial recombinant protein with GST tag. MW of the GST tag alone is 26 KDa.
Sequence	IDRCNYVRVGTTRVPLTGTPVKEKIMAVIKEWGTGRDTRLRCLALATRDTPPKREEMVLDDSFLEY ETDLTFVGVVGMLDPPRKEVTGSIQ
Host	Mouse
Reactivity	Human
Isotype	IgG1 Kappa
Quality Control Testing	Antibody Reactive Against Recombinant Protein. Western Blot detection against Immunogen (35.75 KDa) .
Storage Buffer	In 1x PBS, pH 7.4
Storage Instruction	Store at -20°C or lower. Aliquot to avoid repeated freezing and thawing.

## Applications

- Western Blot (Recombinant protein)

[Protocol Download](#)

- Sandwich ELISA (Recombinant protein)

Detection limit for recombinant GST tagged ATP2A1 is 0.03 ng/ml as a capture antibody.

[Protocol Download](#)

- ELISA

- Immunofluorescence

Immunofluorescence of monoclonal antibody to ATP2A1 on HeLa cell . [antibody concentration 10 ug/ml]

## Gene Info — ATP2A1

Entrez GeneID	<a href="#">487</a>
GeneBank Accession#	<a href="#">NM_173201</a>
Protein Accession#	<a href="#">NP_775293</a>
Gene Name	ATP2A1

Gene Alias	ATP2A, SERCA1
Gene Description	ATPase, Ca++ transporting, cardiac muscle, fast twitch 1
Omim ID	<a href="#">108730 601003</a>
Gene Ontology	<a href="#">Hyperlink</a>
Gene Summary	<p>This gene encodes one of the SERCA Ca(2+)-ATPases, which are intracellular pumps located in the sarcoplasmic or endoplasmic reticula of muscle cells. This enzyme catalyzes the hydrolysis of ATP coupled with the translocation of calcium from the cytosol to the sarcoplasmic reticulum lumen, and is involved in muscular excitation and contraction. Mutations in this gene cause some autosomal recessive forms of Brody disease, characterized by increasing impairment of muscular relaxation during exercise. Alternative splicing results in two transcript variants encoding different isoforms. [provided by RefSeq]</p>
Other Designations	ATPase, Ca++ transporting, fast twitch 1 OTTHUMP00000162562 SR Ca(2+)-ATPase 1 calcium pump 1 calcium-transporting ATPase sarcoplasmic reticulum type, fast twitch skeletal muscle isoform endoplasmic reticulum class 1/2 Ca(2+) ATPase sarcoplasmic/endoplasm

## Pathway

- [Calcium signaling pathway](#)