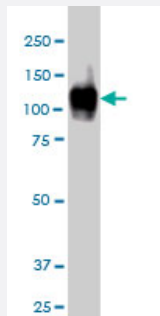


ATP2A1 monoclonal antibody (M01), clone 1B11

Catalog # H00000487-M01

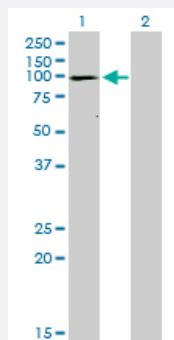
Size 100 ug

Applications



Western Blot (Cell lysate)

ATP2A1 monoclonal antibody (M01), clone 1B11. Western Blot analysis of ATP2A1 expression in A-431 (Cat # L015V1).

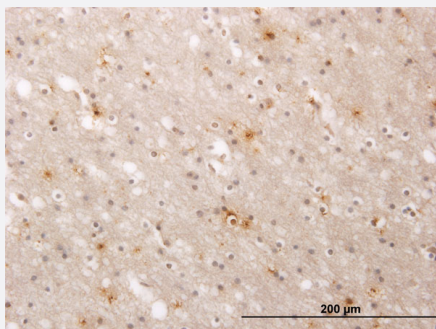


Western Blot (Transfected lysate)

Western Blot analysis of ATP2A1 expression in transfected 293T cell line by ATP2A1 monoclonal antibody (M01), clone 1B11.

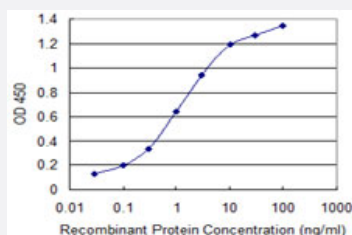
Lane 1: ATP2A1 transfected lysate(109.3 KDa).

Lane 2: Non-transfected lysate.



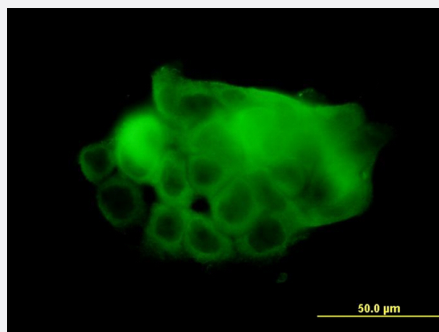
Immunohistochemistry (Formalin/PFA-fixed paraffin-embedded sections)

Immunoperoxidase of monoclonal antibody to ATP2A1 on formalin-fixed paraffin-embedded human cerebral cortex. [antibody concentration 3 ug/ml]



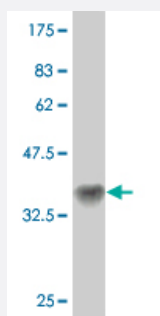
Sandwich ELISA (Recombinant protein)

Detection limit for recombinant GST tagged ATP2A1 is 0.03 ng/ml as a capture antibody.



Immunofluorescence

Immunofluorescence of monoclonal antibody to ATP2A1 on A-431 cell.
[antibody concentration 10 ug/ml]



Western Blot detection against Immunogen (35.75 KDa) .

Specification

| | |
|--------------------------------|---|
| Product Description | Mouse monoclonal antibody raised against a partial recombinant ATP2A1. |
| Immunogen | ATP2A1 (NP_775293, 522 a.a. ~ 612 a.a) partial recombinant protein with GST tag. MW of the GST tag alone is 26 KDa. |
| Sequence | IDRCNYVRVGTTTRVPLTGPVKEKIMAVIKEWGTGRDTRLRCLALATRDTPPKREEMVLDDSFLEY ETDLTFVGVVGMLDPPRKEVTGSIQ |
| Host | Mouse |
| Reactivity | Human |
| Isotype | IgG1 Kappa |
| Quality Control Testing | Antibody Reactive Against Recombinant Protein. Western Blot detection against Immunogen (35.75 KDa) . |
| Storage Buffer | In 1x PBS, pH 7.4 |
| Storage Instruction | Store at -20°C or lower. Aliquot to avoid repeated freezing and thawing. |

Applications

- Western Blot (Cell lysate)

ATP2A1 monoclonal antibody (M01), clone 1B11. Western Blot analysis of ATP2A1 expression in A-431 (Cat # L015V1).

[Protocol Download](#)

- Western Blot (Transfected lysate)

Western Blot analysis of ATP2A1 expression in transfected 293T cell line by ATP2A1 monoclonal antibody (M01), clone 1B11.

Lane 1: ATP2A1 transfected lysate(109.3 KDa).

Lane 2: Non-transfected lysate.

[Protocol Download](#)

- Western Blot (Recombinant protein)

[Protocol Download](#)

- Immunohistochemistry (Formalin/PFA-fixed paraffin-embedded sections)

Immunoperoxidase of monoclonal antibody to ATP2A1 on formalin-fixed paraffin-embedded human cerebral cortex. [antibody concentration 3 ug/ml]

[Protocol Download](#)

- Sandwich ELISA (Recombinant protein)

Detection limit for recombinant GST tagged ATP2A1 is 0.03 ng/ml as a capture antibody.

[Protocol Download](#)

- ELISA

- Immunofluorescence

Immunofluorescence of monoclonal antibody to ATP2A1 on A-431 cell. [antibody concentration 10 ug/ml]

Gene Info — ATP2A1

| | |
|---------------|---------------------|
| Entrez GeneID | 487 |
|---------------|---------------------|

| | |
|---------------------|---------------------------|
| GeneBank Accession# | NM_173201 |
|---------------------|---------------------------|

| | |
|--------------------|---------------------------|
| Protein Accession# | NP_775293 |
|--------------------|---------------------------|

| | |
|-----------|--------|
| Gene Name | ATP2A1 |
|-----------|--------|

| | |
|------------|---------------|
| Gene Alias | ATP2A, SERCA1 |
|------------|---------------|

| | |
|--------------------|---|
| Gene Description | ATPase, Ca++ transporting, cardiac muscle, fast twitch 1 |
| Omim ID | 108730 601003 |
| Gene Ontology | Hyperlink |
| Gene Summary | <p>This gene encodes one of the SERCA Ca(2+)-ATPases, which are intracellular pumps located in the sarcoplasmic or endoplasmic reticula of muscle cells. This enzyme catalyzes the hydrolysis of ATP coupled with the translocation of calcium from the cytosol to the sarcoplasmic reticulum lumen, and is involved in muscular excitation and contraction. Mutations in this gene cause some autosomal recessive forms of Brody disease, characterized by increasing impairment of muscular relaxation during exercise. Alternative splicing results in two transcript variants encoding different isoforms. [provided by RefSeq]</p> |
| Other Designations | ATPase, Ca++ transporting, fast twitch 1 OTTHUMP00000162562 SR Ca(2+)-ATPase 1 calcium pump 1 calcium-transporting ATPase sarcoplasmic reticulum type, fast twitch skeletal muscle isoform endoplasmic reticulum class 1/2 Ca(2+) ATPase sarcoplasmic/endoplasm |

Pathway

- [Calcium signaling pathway](#)