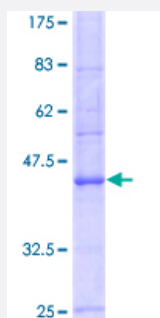


ATP1A3 (Human) Recombinant Protein (Q01)

Catalog # H00000478-Q01

Size 25 ug, 10 ug

Applications



Specification

Product Description	Human ATP1A3 partial ORF (NP_689509.1 , 879 a.a. - 984 a.a.) recombinant protein with GST-tag at N-terminal.
Sequence	NWDDRTVNDLEDSYGQQWTYEQRKVVVEFTCHTAFFVSIVVQWADLIICKTRRNSVFQQGMKNKILIFGLFEETALAAFLSYCPGMDVALRMYPLKPSWWFCAFPY
Host	Wheat Germ (in vitro)
Theoretical MW (kDa)	37.4
Interspecies Antigen Sequence	Rat (99)
Preparation Method	in vitro wheat germ expression system
Purification	Glutathione Sepharose 4 Fast Flow
Quality Control Testing	12.5% SDS-PAGE Stained with Coomassie Blue.
Storage Buffer	50 mM Tris-HCl, 10 mM reduced Glutathione, pH=8.0 in the elution buffer.
Storage Instruction	Store at -80°C. Aliquot to avoid repeated freezing and thawing.
Note	Best use within three months from the date of receipt of this protein.

Applications

- Enzyme-linked Immunoabsorbent Assay
- Western Blot (Recombinant protein)
- Antibody Production
- Protein Array

Gene Info — ATP1A3

Entrez GeneID [478](#)

GeneBank Accession# [NM_152296](#)

Protein Accession# [NP_689509.1](#)

Gene Name ATP1A3

Gene Alias DYT12, MGC13276, RDP

Gene Description ATPase, Na⁺/K⁺ transporting, alpha 3 polypeptide

Omim ID [128235](#) [182350](#)

Gene Ontology [Hyperlink](#)

Gene Summary

The protein encoded by this gene belongs to the family of P-type cation transport ATPases, and to the subfamily of Na⁺/K⁺ -ATPases. Na⁺/K⁺ -ATPase is an integral membrane protein responsible for establishing and maintaining the electrochemical gradients of Na and K ions across the plasma membrane. These gradients are essential for osmoregulation, for sodium-coupled transport of a variety of organic and inorganic molecules, and for electrical excitability of nerve and muscle. This enzyme is composed of two subunits, a large catalytic subunit (alpha) and a smaller glycoprotein subunit (beta). The catalytic subunit of Na⁺/K⁺ -ATPase is encoded by multiple genes. This gene encodes an alpha 3 subunit. [provided by RefSeq]

Other Designations

Na⁺/K⁺ -ATPase alpha 3 subunit|Na⁺/K⁺ ATPase 3|sodium pump 3|sodium-potassium-ATPase, alpha 3 polypeptide|sodium/potassium-transporting ATPase alpha-3 chain

Pathway

- [Cardiac muscle contraction](#)

Disease

- [Bipolar Disorder](#)
- [Genetic Predisposition to Disease](#)