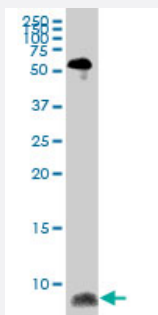


# ATOX1 monoclonal antibody (M08), clone 4D6

Catalog # H00000475-M08

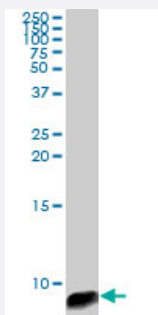
Size 100 ug

## Applications



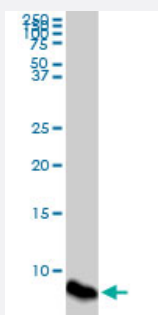
### Western Blot (Tissue lysate)

ATOX1 monoclonal antibody (M08), clone 4D6. Western Blot analysis of ATOX1 expression in human spleen.



### Western Blot (Cell lysate)

ATOX1 monoclonal antibody (M08), clone 4D6. Western Blot analysis of ATOX1 expression in HepG2 ( Cat # L019V1 ).

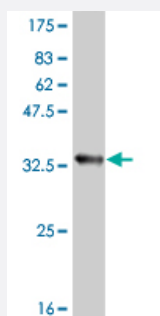
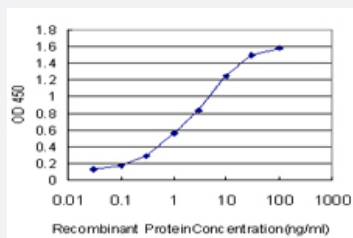


### Western Blot (Cell lysate)

ATOX1 monoclonal antibody (M08), clone 4D6. Western Blot analysis of ATOX1 expression in COLO 320 HSR ( Cat # L020V1 ).

## Sandwich ELISA (Recombinant protein)

Detection limit for recombinant GST tagged ATOX1 is approximately 0.03ng/ml as a capture antibody.



Western Blot detection against Immunogen (33.22 KDa) .

## Specification

<b>Product Description</b>	Mouse monoclonal antibody raised against a partial recombinant ATOX1.
<b>Immunogen</b>	ATOX1 (NP_004036, 1 a.a. ~ 68 a.a) partial recombinant protein with GST tag. MW of the GST tag alone is 26 KDa.
<b>Sequence</b>	MPKHEFSVDMTCGGCAEAVSRVLNKLGGVKYDIDLPNKKVCIESEHSMDTLLATLKKTGKTVSYL GLE
<b>Host</b>	Mouse
<b>Reactivity</b>	Human
<b>Interspecies Antigen Sequence</b>	Mouse (88); Rat (89)
<b>Isotype</b>	IgG2a Kappa
<b>Quality Control Testing</b>	Antibody Reactive Against Recombinant Protein. Western Blot detection against Immunogen (33.22 KDa) .
<b>Storage Buffer</b>	In 1x PBS, pH 7.4
<b>Storage Instruction</b>	Store at -20°C or lower. Aliquot to avoid repeated freezing and thawing.

## Applications

- Western Blot (Tissue lysate)

ATOX1 monoclonal antibody (M08), clone 4D6. Western Blot analysis of ATOX1 expression in human spleen.

[Protocol Download](#)

- Western Blot (Cell lysate)

ATOX1 monoclonal antibody (M08), clone 4D6. Western Blot analysis of ATOX1 expression in HepG2 ( Cat # L019V1 ).

[Protocol Download](#)

- Western Blot (Cell lysate)

ATOX1 monoclonal antibody (M08), clone 4D6. Western Blot analysis of ATOX1 expression in COLO 320 HSR ( Cat # L020V1 ).

[Protocol Download](#)

- Western Blot (Recombinant protein)

[Protocol Download](#)

- Sandwich ELISA (Recombinant protein)

Detection limit for recombinant GST tagged ATOX1 is approximately 0.03ng/ml as a capture antibody.

[Protocol Download](#)

- ELISA

## Gene Info — ATOX1

Entrez GeneID	<a href="#">475</a>
---------------	---------------------

GeneBank Accession#	<a href="#">NM_004045</a>
---------------------	---------------------------

Protein Accession#	<a href="#">NP_004036</a>
--------------------	---------------------------

Gene Name	ATOX1
-----------	-------

Gene Alias	ATX1, HAH1, MGC138453, MGC138455
------------	----------------------------------

Gene Description	ATX1 antioxidant protein 1 homolog (yeast)
------------------	--

**Omim ID** [602270](#)

**Gene Ontology** [Hyperlink](#)

**Gene Summary** This gene encodes a copper chaperone that plays a role in copper homeostasis by binding and transporting cytosolic copper to ATPase proteins in the trans-Golgi network for later incorporation to the ceruloplasmin. This protein also functions as an antioxidant against superoxide and hydrogen peroxide, and therefore, may play a significant role in cancer carcinogenesis. Because of its cytoplasmic location, this gene represents a candidate gene for 5q-syndrome. [provided by RefSeq]

**Other Designations** antioxidant protein 1|copper transport protein|metal transport protein

## Disease

- [Genetic Predisposition to Disease](#)
- [Hepatolenticular Degeneration](#)