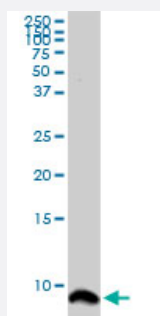


ATOX1 monoclonal antibody (M07), clone 4A12

Catalog # H00000475-M07

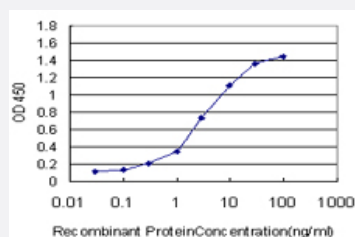
Size 100 ug

Applications



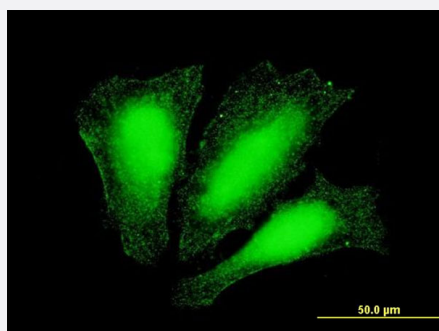
Western Blot (Cell lysate)

ATOX1 monoclonal antibody (M07), clone 4A12. Western Blot analysis of ATOX1 expression in COLO 320 HSR (Cat # L020V1).



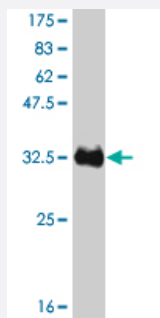
Sandwich ELISA (Recombinant protein)

Detection limit for recombinant GST tagged ATOX1 is approximately 0.1ng/ml as a capture antibody.



Immunofluorescence

Immunofluorescence of monoclonal antibody to ATOX1 on HeLa cell . [antibody concentration 10 ug/ml]



Western Blot detection against Immunogen (33.22 KDa) .

Specification

Product Description	Mouse monoclonal antibody raised against a partial recombinant ATOX1.
Immunogen	ATOX1 (NP_004036, 1 a.a. ~ 68 a.a) partial recombinant protein with GST tag. MW of the GST tag alone is 26 KDa.
Sequence	MPKHEFSVDMTCGGCAEAVSRVLNKLGGVKYDIDLPNKKVCIESEHSMDTLLATLKKTGKTVSYL GLE
Host	Mouse
Reactivity	Human
Interspecies Antigen Sequence	Mouse (88); Rat (89)
Isotype	IgG2a Kappa
Quality Control Testing	Antibody Reactive Against Recombinant Protein. Western Blot detection against Immunogen (33.22 KDa) .
Storage Buffer	In 1x PBS, pH 7.4
Storage Instruction	Store at -20°C or lower. Aliquot to avoid repeated freezing and thawing.

Applications

- Western Blot (Cell lysate)

ATOX1 monoclonal antibody (M07), clone 4A12. Western Blot analysis of ATOX1 expression in COLO 320 HSR (Cat # L020V1).

[Protocol Download](#)

- Western Blot (Recombinant protein)

[Protocol Download](#)

- Sandwich ELISA (Recombinant protein)

Detection limit for recombinant GST tagged ATOX1 is approximately 0.1ng/ml as a capture antibody.

[Protocol Download](#)

- ELISA

- Immunofluorescence

Immunofluorescence of monoclonal antibody to ATOX1 on HeLa cell . [antibody concentration 10 ug/ml]

Gene Info — ATOX1

Entrez GeneID [475](#)

GeneBank Accession# [NM_004045](#)

Protein Accession# [NP_004036](#)

Gene Name ATOX1

Gene Alias ATX1, HAH1, MGC138453, MGC138455

Gene Description ATX1 antioxidant protein 1 homolog (yeast)

Omim ID [602270](#)

Gene Ontology [Hyperlink](#)

Gene Summary This gene encodes a copper chaperone that plays a role in copper homeostasis by binding and transporting cytosolic copper to ATPase proteins in the trans-Golgi network for later incorporation to the ceruloplasmin. This protein also functions as an antioxidant against superoxide and hydrogen peroxide, and therefore, may play a significant role in cancer carcinogenesis. Because of its cytoplasmic location, this gene represents a candidate gene for 5q-syndrome. [provided by RefSeq]

Other Designations antioxidant protein 1|copper transport protein|metal transport protein

Disease

- [Genetic Predisposition to Disease](#)

- [Hepatolenticular Degeneration](#)