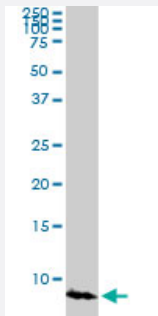


ATOX1 monoclonal antibody (M03), clone 3D10

Catalog # H00000475-M03

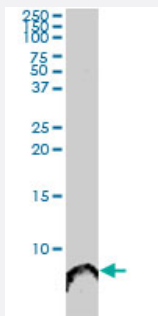
Size 50 ug

Applications



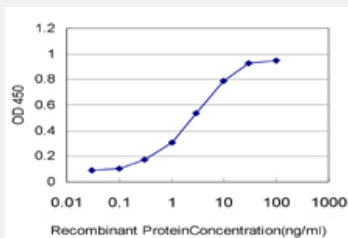
Western Blot (Cell lysate)

ATOX1 monoclonal antibody (M03), clone 3D10. Western Blot analysis of ATOX1 expression in COLO 320 HSR (Cat # L020V1).



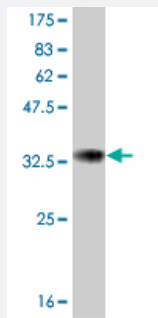
Western Blot (Cell lysate)

ATOX1 monoclonal antibody (M03), clone 3D10. Western Blot analysis of ATOX1 expression in HepG2 (Cat # L019V1).



Sandwich ELISA (Recombinant protein)

Detection limit for recombinant GST tagged ATOX1 is approximately 0.1ng/ml as a capture antibody.



Western Blot detection against Immunogen (33.22 KDa) .

Specification

| | |
|--------------------------------------|---|
| Product Description | Mouse monoclonal antibody raised against a partial recombinant ATOX1. |
| Immunogen | ATOX1 (NP_004036, 1 a.a. ~ 68 a.a) partial recombinant protein with GST tag. MW of the GST tag alone is 26 KDa. |
| Sequence | MPKHEFSVDMTCGGCAEAVSRVLNKLGGVKYDIDLPNKKVCIESEHSMDTLLATLKKTGKTVSYL GLE |
| Host | Mouse |
| Reactivity | Human |
| Interspecies Antigen Sequence | Mouse (88); Rat (89) |
| Isotype | IgG2a Kappa |
| Quality Control Testing | Antibody Reactive Against Recombinant Protein. Western Blot detection against Immunogen (33.22 KDa) . |
| Storage Buffer | In 1x PBS, pH 7.4 |
| Storage Instruction | Store at -20°C or lower. Aliquot to avoid repeated freezing and thawing. |

Applications

- Western Blot (Cell lysate)

ATOX1 monoclonal antibody (M03), clone 3D10. Western Blot analysis of ATOX1 expression in COLO 320 HSR (Cat # L020V1).

[Protocol Download](#)

- Western Blot (Cell lysate)

ATOX1 monoclonal antibody (M03), clone 3D10. Western Blot analysis of ATOX1 expression in HepG2 (Cat # L019V1).

[Protocol Download](#)

- Western Blot (Recombinant protein)

[Protocol Download](#)

- Sandwich ELISA (Recombinant protein)

Detection limit for recombinant GST tagged ATOX1 is approximately 0.1ng/ml as a capture antibody.

[Protocol Download](#)

- ELISA

Gene Info — ATOX1

Entrez GeneID [475](#)

GeneBank Accession# [NM_004045](#)

Protein Accession# [NP_004036](#)

Gene Name ATOX1

Gene Alias ATX1, HAH1, MGC138453, MGC138455

Gene Description ATX1 antioxidant protein 1 homolog (yeast)

Omim ID [602270](#)

Gene Ontology [Hyperlink](#)

Gene Summary This gene encodes a copper chaperone that plays a role in copper homeostasis by binding and transporting cytosolic copper to ATPase proteins in the trans-Golgi network for later incorporation to the ceruloplasmin. This protein also functions as an antioxidant against superoxide and hydrogen peroxide, and therefore, may play a significant role in cancer carcinogenesis. Because of its cytogenetic location, this gene represents a candidate gene for 5q-syndrome. [provided by RefSeq]

Other Designations antioxidant protein 1|copper transport protein|metal transport protein

Disease

- [Genetic Predisposition to Disease](#)

- [Hepatolenticular Degeneration](#)