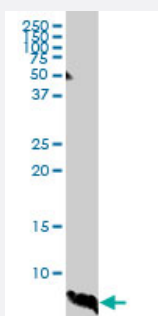


ATOX1 monoclonal antibody (M01), clone 2E6

Catalog # H00000475-M01

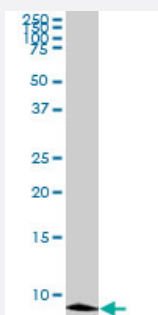
Size 100 ug

Applications



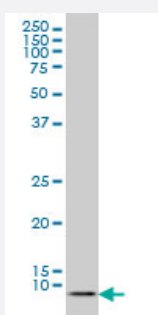
Western Blot (Tissue lysate)

ATOX1 monoclonal antibody (M01), clone 2E6. Western Blot analysis of ATOX1 expression in human liver.



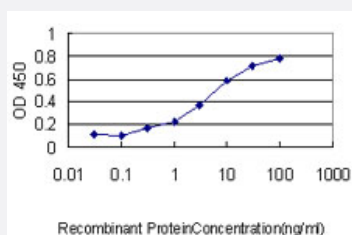
Western Blot (Cell lysate)

ATOX1 monoclonal antibody (M01), clone 2E6. Western Blot analysis of ATOX1 expression in COLO 320 HSR (Cat # L020V1).



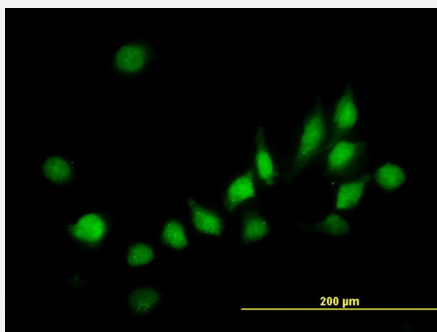
Western Blot (Cell lysate)

ATOX1 monoclonal antibody (M01), clone 2E6 Western Blot analysis of ATOX1 expression in Hela S3 NE (Cat # L013V3).



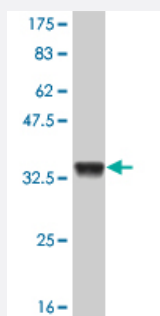
Sandwich ELISA (Recombinant protein)

Detection limit for recombinant GST tagged ATOX1 is approximately 0.3ng/ml as a capture antibody.



Immunofluorescence

Immunofluorescence of monoclonal antibody to ATOX1 on HeLa cell. [antibody concentration 10 ug/ml]



Western Blot detection against Immunogen (33.22 KDa) .

Specification

Product Description	Mouse monoclonal antibody raised against a partial recombinant ATOX1.
Immunogen	ATOX1 (NP_004036, 1 a.a. ~ 68 a.a) partial recombinant protein with GST tag. MW of the GST tag alone is 26 KDa.
Sequence	MPKHEFSVDMTCGGCAEAVSRVLNKLGGVKYDIDLPNKKVCIESEHSDTLLATLKKTGKTVSYL GLE
Host	Mouse
Reactivity	Human
Interspecies Antigen Sequence	Mouse (88); Rat (89)
Isotype	IgG2a Kappa
Quality Control Testing	Antibody Reactive Against Recombinant Protein. Western Blot detection against Immunogen (33.22 KDa) .
Storage Buffer	In 1x PBS, pH 7.4
Storage Instruction	Store at -20°C or lower. Aliquot to avoid repeated freezing and thawing.

Applications

- Western Blot (Tissue lysate)

ATOX1 monoclonal antibody (M01), clone 2E6. Western Blot analysis of ATOX1 expression in human liver.

[Protocol Download](#)

- Western Blot (Cell lysate)

ATOX1 monoclonal antibody (M01), clone 2E6. Western Blot analysis of ATOX1 expression in COLO 320 HSR (Cat # L020V1).

[Protocol Download](#)

- Western Blot (Cell lysate)

ATOX1 monoclonal antibody (M01), clone 2E6 Western Blot analysis of ATOX1 expression in Hela S3 NE (Cat # L013V3).

[Protocol Download](#)

- Western Blot (Recombinant protein)

[Protocol Download](#)

- Sandwich ELISA (Recombinant protein)

Detection limit for recombinant GST tagged ATOX1 is approximately 0.3ng/ml as a capture antibody.

[Protocol Download](#)

- ELISA

- Immunofluorescence

Immunofluorescence of monoclonal antibody to ATOX1 on HeLa cell. [antibody concentration 10 ug/ml]

Gene Info — ATOX1

Entrez GeneID	475
GeneBank Accession#	NM_004045
Protein Accession#	NP_004036
Gene Name	ATOX1

Gene Alias	ATX1, HAH1, MGC138453, MGC138455
Gene Description	ATX1 antioxidant protein 1 homolog (yeast)
Omim ID	602270
Gene Ontology	Hyperlink
Gene Summary	<p>This gene encodes a copper chaperone that plays a role in copper homeostasis by binding and transporting cytosolic copper to ATPase proteins in the trans-Golgi network for later incorporation to the ceruloplasmin. This protein also functions as an antioxidant against superoxide and hydrogen peroxide, and therefore, may play a significant role in cancer carcinogenesis. Because of its cytogenetic location, this gene represents a candidate gene for 5q-syndrome. [provided by RefSeq]</p>
Other Designations	antioxidant protein 1 copper transport protein metal transport protein

Disease

- [Genetic Predisposition to Disease](#)
- [Hepatolenticular Degeneration](#)