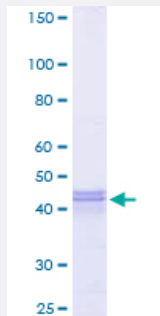


# ATF4 (Human) Recombinant Protein (Q01)

Catalog # H00000468-Q01

Size 25 ug, 10 ug

## Applications



## Specification

<b>Product Description</b>	Human ATF4 partial ORF ( NP_001666.2, 171 a.a. - 270 a.a.) recombinant protein with GST-tag at N-terminal.
<b>Sequence</b>	SSTPDHSFSLELGSEVDITEGDRKPDYTAYVAMIPQCICEEDTPSDNDSGICMSPESYLGSPQHSP STRGSPNRSPLSPGVLCGSARPKPYDPPGEKMVA
<b>Host</b>	Wheat Germ (in vitro)
<b>Theoretical MW (kDa)</b>	36.74
<b>Preparation Method</b>	<a href="#">in vitro wheat germ expression system</a>
<b>Purification</b>	Glutathione Sepharose 4 Fast Flow
<b>Quality Control Testing</b>	12.5% SDS-PAGE Stained with Coomassie Blue.
<b>Storage Buffer</b>	50 mM Tris-HCl, 10 mM reduced Glutathione, pH=8.0 in the elution buffer.
<b>Storage Instruction</b>	Store at -80°C. Aliquot to avoid repeated freezing and thawing.
<b>Note</b>	Best use within three months from the date of receipt of this protein.

## Applications

- Enzyme-linked Immunoabsorbent Assay
- Western Blot (Recombinant protein)
- Antibody Production
- Protein Array

## Gene Info — ATF4

**Entrez GeneID** [468](#)

**GeneBank Accession#** [NM\\_001675](#)

**Protein Accession#** [NP\\_001666.2](#)

**Gene Name** ATF4

**Gene Alias** CREB-2, CREB2, TAXREB67, TXREB

**Gene Description** activating transcription factor 4 (tax-responsive enhancer element B67)

**Omim ID** [604064](#)

**Gene Ontology** [Hyperlink](#)

**Gene Summary** This gene encodes a transcription factor that was originally identified as a widely expressed mammalian DNA binding protein that could bind a tax-responsive enhancer element in the LTR of HTLV-1. The encoded protein was also isolated and characterized as the cAMP-response element binding protein 2 (CREB-2). The protein encoded by this gene belongs to a family of DNA-binding proteins that includes the AP-1 family of transcription factors, cAMP-response element binding proteins (CREBs) and CREB-like proteins. These transcription factors share a leucine zipper region that is involved in protein-protein interactions, located C-terminal to a stretch of basic amino acids that functions as a DNA binding domain. Two alternative transcripts encoding the same protein have been described. Two pseudogenes are located on the X chromosome at q28 in a region containing a large inverted duplication. [provided by RefSeq]

**Other Designations** activating transcription factor 4|cAMP response element-binding protein 2

## Pathway

- [GnRH signaling pathway](#)

- [Long-term potentiation](#)
- [MAPK signaling pathway](#)
- [Neurotrophin signaling pathway](#)
- [Prostate cancer](#)

## Disease

- [Bipolar Disorder](#)
- [Genetic Predisposition to Disease](#)
- [Mental Disorders](#)
- [Neuropsychological Tests](#)
- [Schizophrenia](#)