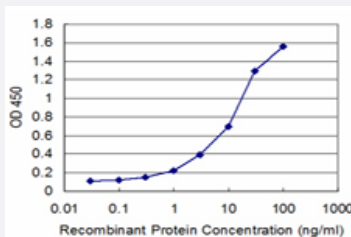


ATF4 monoclonal antibody (M07), clone 2E3

Catalog # H00000468-M07

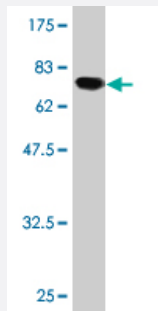
Size 100 ug

Applications



Sandwich ELISA (Recombinant protein)

Detection limit for recombinant GST tagged ATF4 is approximately 0.3ng/ml as a capture antibody.



Western Blot detection against Immunogen (64.35 KDa) .

Specification

Product Description

Mouse monoclonal antibody raised against a full-length recombinant ATF4.

Immunogen

ATF4 (AAH08090, 1 a.a. ~ 351 a.a) full-length recombinant protein with GST tag. MW of the GST tag alone is 26 KDa.

Sequence

MTEMSFLSSEVLVGDLMSPFDPSPGLGAEESLGLDDYLEVAKHFKPHGFSSDKAKAGSSEWLA
VDGLVSPSNNSKEDAFSGTDWMLEKMDLKEFDLDALLGIDDLETMPDDLTTLDDTCDLFAPLV
QETNKQPPQTVNPIGHLPESLTKPDQVAPFTFLQPPPLSPGVLSSTPDHSFSLELGSEVDITEGD
RKPDTYAYVAMIPQCICEEDTPSDNDSGICMSPESYLGSPQHSPSTRGSPNRSPLSPGVLCGSAR
PKPYDPPGEKMVAACKVKGELDKKLKKMEQNKTAATRYRQKKRAEQEALTGECKELEKKNEAL
KERADSLAKEIQYLKDLIEVRKARGKKRVP

Host

Mouse

Reactivity	Human
Isotype	IgG2a Kappa
Quality Control Testing	Antibody Reactive Against Recombinant Protein. Western Blot detection against Immunogen (64.35 KDa) .
Storage Buffer	In 1x PBS, pH 7.4
Storage Instruction	Store at -20°C or lower. Aliquot to avoid repeated freezing and thawing.

Applications

- Western Blot (Recombinant protein)

[Protocol Download](#)

- Sandwich ELISA (Recombinant protein)

Detection limit for recombinant GST tagged ATF4 is approximately 0.3ng/ml as a capture antibody.

[Protocol Download](#)

- ELISA

Gene Info — ATF4

Entrez GeneID	468
GeneBank Accession#	BC008090
Protein Accession#	AAH08090
Gene Name	ATF4
Gene Alias	CREB-2, CREB2, TAXREB67, TXREB
Gene Description	activating transcription factor 4 (tax-responsive enhancer element B67)
Omim ID	604064
Gene Ontology	Hyperlink

Gene Summary

This gene encodes a transcription factor that was originally identified as a widely expressed mammalian DNA binding protein that could bind a tax-responsive enhancer element in the LTR of HTLV-1. The encoded protein was also isolated and characterized as the cAMP-response element binding protein 2 (CREB-2). The protein encoded by this gene belongs to a family of DNA-binding proteins that includes the AP-1 family of transcription factors, cAMP-response element binding proteins (CREBs) and CREB-like proteins. These transcription factors share a leucine zipper region that is involved in protein-protein interactions, located C-terminal to a stretch of basic amino acids that functions as a DNA binding domain. Two alternative transcripts encoding the same protein have been described. Two pseudogenes are located on the X chromosome at q28 in a region containing a large inverted duplication. [provided by RefSeq]

Other Designations

activating transcription factor 4|cAMP response element-binding protein 2

Pathway

- [GnRH signaling pathway](#)
- [Long-term potentiation](#)
- [MAPK signaling pathway](#)
- [Neurotrophin signaling pathway](#)
- [Prostate cancer](#)

Disease

- [Bipolar Disorder](#)
- [Genetic Predisposition to Disease](#)
- [Mental Disorders](#)
- [Neuropsychological Tests](#)
- [Schizophrenia](#)