

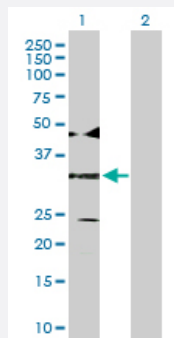
MaxPab®

ATF4 purified MaxPab rabbit polyclonal antibody (D01P)

Catalog # H00000468-D01P

Size 100 ug

Applications

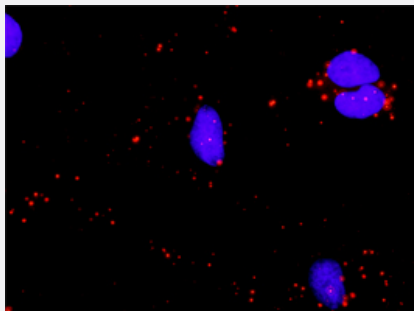


Western Blot (Transfected lysate)

Western Blot analysis of ATF4 expression in transfected 293T cell line ([H00000468-T02](#)) by ATF4 MaxPab polyclonal antibody.

Lane 1: ATF4 transfected lysate(38.60 KDa).

Lane 2: Non-transfected lysate.



In situ Proximity Ligation Assay (Cell)

Proximity Ligation Analysis of protein-protein interactions between ATF4 and CREBBP. HeLa cells were stained with anti-ATF4 rabbit purified polyclonal 1:1200 and anti-CREBBP mouse monoclonal antibody 1:50. Each red dot represents the detection of protein-protein interaction complex, and nuclei were counterstained with DAPI (blue).

Specification

| | |
|---------------------|---|
| Product Description | Rabbit polyclonal antibody raised against a full-length human ATF4 protein. |
| Immunogen | ATF4 (NP_001666.2, 1 a.a. ~ 351 a.a) full-length human protein. |
| Sequence | MTEMSFLSSEVLVGDLMSPFDDQSGLGAEESLGLDDYLEVAKHFKPHGFSSDKAKAGSSEWLA VDGLVSPSNNKEDAFSGTDWMLKMDLKEFDLDALLGIDDLETMPDDLTTLDLDDTCDLDFAPLV QETNKQPPQTVNPIGHLPESLTKPDQVAPFTFLQPLPLSPGVLSSSTPDHSFSLELGSEVDITEGDR KPDYATAYVAMIPQCIEEDTPSDNDSGICMSPESYLGSPPHSPSTRGSPNRSPLSPGVLCGSARP KPYDPPGEKMVAACKVKGEKLDKLLKKMEQNKTAATRYRQKKRAEQEALTGECKELEKKNEALK ERADSLAKEIQYLKDLIEEVRKARGKKRVP |
| Host | Rabbit |

| | |
|-------------------------|--|
| Reactivity | Human |
| Quality Control Testing | Antibody reactive against mammalian transfected lysate. |
| Storage Buffer | In 1x PBS, pH 7.4 |
| Storage Instruction | Store at -20°C or lower. Aliquot to avoid repeated freezing and thawing. |

Applications

- Western Blot (Transfected lysate)

Western Blot analysis of ATF4 expression in transfected 293T cell line ([H00000468-T02](#)) by ATF4 MaxPab polyclonal antibody.

Lane 1: ATF4 transfected lysate(38.60 KDa).

Lane 2: Non-transfected lysate.

[Protocol Download](#)

- In situ* Proximity Ligation Assay (Cell)

Proximity Ligation Analysis of protein-protein interactions between ATF4 and CREBBP. HeLa cells were stained with anti-ATF4 rabbit purified polyclonal 1:1200 and anti-CREBBP mouse monoclonal antibody 1:50. Each red dot represents the detection of protein-protein interaction complex, and nuclei were counterstained with DAPI (blue).

Gene Info — ATF4

| | |
|---------------------|---|
| Entrez GeneID | 468 |
| GeneBank Accession# | NM_001675.2 |
| Protein Accession# | NP_001666.2 |
| Gene Name | ATF4 |
| Gene Alias | CREB-2, CREB2, TAXREB67, TXREB |
| Gene Description | activating transcription factor 4 (tax-responsive enhancer element B67) |
| Omim ID | 604064 |
| Gene Ontology | Hyperlink |

Gene Summary

This gene encodes a transcription factor that was originally identified as a widely expressed mammalian DNA binding protein that could bind a tax-responsive enhancer element in the LTR of HTLV-1. The encoded protein was also isolated and characterized as the cAMP-response element binding protein 2 (CREB-2). The protein encoded by this gene belongs to a family of DNA-binding proteins that includes the AP-1 family of transcription factors, cAMP-response element binding proteins (CREBs) and CREB-like proteins. These transcription factors share a leucine zipper region that is involved in protein-protein interactions, located C-terminal to a stretch of basic amino acids that functions as a DNA binding domain. Two alternative transcripts encoding the same protein have been described. Two pseudogenes are located on the X chromosome at q28 in a region containing a large inverted duplication. [provided by RefSeq]

Other Designations

activating transcription factor 4|cAMP response element-binding protein 2

Pathway

- [GnRH signaling pathway](#)
- [Long-term potentiation](#)
- [MAPK signaling pathway](#)
- [Neurotrophin signaling pathway](#)
- [Prostate cancer](#)

Disease

- [Bipolar Disorder](#)
- [Genetic Predisposition to Disease](#)
- [Mental Disorders](#)
- [Neuropsychological Tests](#)
- [Schizophrenia](#)