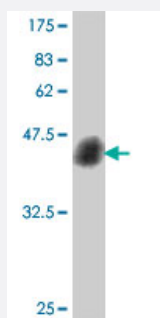


# ATF4 polyclonal antibody (A01)

Catalog # H00000468-A01

Size 50 uL

## Applications



Western Blot detection against Immunogen (37.11 KDa) .

## Specification

<b>Product Description</b>	Mouse polyclonal antibody raised against a partial recombinant ATF4.
<b>Immunogen</b>	ATF4 (NP_001666.2, 171 a.a. ~ 270 a.a) partial recombinant protein with GST tag.
<b>Sequence</b>	SSTPDHSFSLELGSEVDITEGDRKPDYTAYVAMIPQCIKEEDTPSDNDSGICMSPESYLGSPQHSP STRGSPNRSPLSPGVLCGSARPKPYDPPGEKMVA
<b>Host</b>	Mouse
<b>Reactivity</b>	Human
<b>Quality Control Testing</b>	Antibody Reactive Against Recombinant Protein. Western Blot detection against Immunogen (37.11 KDa) .
<b>Storage Buffer</b>	50 % glycerol
<b>Storage Instruction</b>	Store at -20°C or lower. Aliquot to avoid repeated freezing and thawing.

## Applications

- Western Blot (Recombinant protein)

[Protocol Download](#)

- ELISA

## Gene Info — ATF4

Entrez GeneID [468](#)

GeneBank Accession# [NM\\_001675](#)

Protein Accession# [NP\\_001666.2](#)

Gene Name ATF4

Gene Alias CREB-2, CREB2, TAXREB67, TXREB

Gene Description activating transcription factor 4 (tax-responsive enhancer element B67)

Omim ID [604064](#)

Gene Ontology [Hyperlink](#)

**Gene Summary** This gene encodes a transcription factor that was originally identified as a widely expressed mammalian DNA binding protein that could bind a tax-responsive enhancer element in the LTR of HTLV-1. The encoded protein was also isolated and characterized as the cAMP-response element binding protein 2 (CREB-2). The protein encoded by this gene belongs to a family of DNA-binding proteins that includes the AP-1 family of transcription factors, cAMP-response element binding proteins (CREBs) and CREB-like proteins. These transcription factors share a leucine zipper region that is involved in protein-protein interactions, located C-terminal to a stretch of basic amino acids that functions as a DNA binding domain. Two alternative transcripts encoding the same protein have been described. Two pseudogenes are located on the X chromosome at q28 in a region containing a large inverted duplication. [provided by RefSeq]

**Other Designations** activating transcription factor 4|cAMP response element-binding protein 2

## Pathway

- [GnRH signaling pathway](#)
- [Long-term potentiation](#)
- [MAPK signaling pathway](#)
- [Neurotrophin signaling pathway](#)

- [Prostate cancer](#)

## Disease

- [Bipolar Disorder](#)
- [Genetic Predisposition to Disease](#)
- [Mental Disorders](#)
- [Neuropsychological Tests](#)
- [Schizophrenia](#)