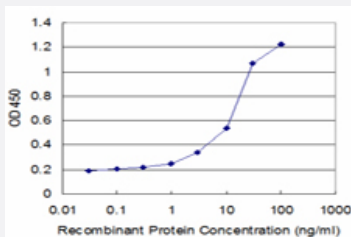


ASPH monoclonal antibody (M09), clone 3G5

Catalog # H00000444-M09

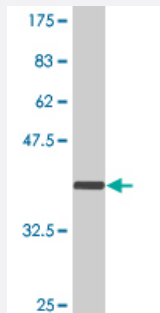
Size 100 ug

Applications



Sandwich ELISA (Recombinant protein)

Detection limit for recombinant GST tagged ASPH is approximately 1ng/ml as a capture antibody.



Western Blot detection against Immunogen (37.84 KDa) .

Specification

Product Description

Mouse monoclonal antibody raised against a partial recombinant ASPH.

Immunogen

ASPH (NP_115857, 161 a.a. ~ 270 a.a) partial recombinant protein with GST tag. MW of the GST tag alone is 26 KDa.

Sequence

PTGEPQQEDDEFLMATDVDDRFETLEPEVSHEETEHSYHVEETVSQDCNQDMEEMMSEQENP
DSSEPVVEDERLHHD TDDVTYQVYEEQAVYEPLENEGIEITEVTAPPE

Host

Mouse

Reactivity

Human

Isotype

IgG2a Kappa

Quality Control Testing

Antibody Reactive Against Recombinant Protein.
Western Blot detection against Immunogen (37.84 KDa) .

Storage Buffer

In 1x PBS, pH 7.4

Storage Instruction

Store at -20°C or lower. Aliquot to avoid repeated freezing and thawing.

Applications

- Western Blot (Recombinant protein)

[Protocol Download](#)

- Sandwich ELISA (Recombinant protein)

Detection limit for recombinant GST tagged ASPH is approximately 1ng/ml as a capture antibody.

[Protocol Download](#)

- ELISA

Gene Info — ASPH

Entrez GeneID

[444](#)

GeneBank Accession#

[NM_032468](#)

Protein Accession#

[NP_115857](#)

Gene Name

ASPH

Gene Alias

BAH, CASQ2BP1, HAAH, JCTN, junctin

Gene Description

aspartate beta-hydroxylase

Omim ID

[600582](#)

Gene Ontology

[Hyperlink](#)

Gene Summary

This gene is thought to play an important role in calcium homeostasis. The gene is expressed from two promoters and undergoes extensive alternative splicing. The encoded set of proteins share varying amounts of overlap near their N-termini but have substantial variations in their C-terminal domains resulting in distinct functional properties. The longest isoforms (a and f) include a C-terminal Aspartyl/Asparaginyl beta-hydroxylase domain that hydroxylates aspartic acid or asparagine residues in the epidermal growth factor (EGF)-like domains of some proteins, including protein C, coagulation factors VII, IX, and X, and the complement factors C1R and C1S. Other isoforms differ primarily in the C-terminal sequence and lack the hydroxylase domain, and some have been localized to the endoplasmic and sarcoplasmic reticulum. Some of these isoforms are found in complexes with calsequestrin, triadin, and the ryanodine receptor, and have been shown to regulate calcium release from the sarcoplasmic reticulum. Some isoforms have been implicated in metastasis. [provided by RefSeq]

Other Designations

aspartyl/asparaginyl-beta-hydroxylase|humbug|junctate|peptide-aspartate beta-dioxygenase