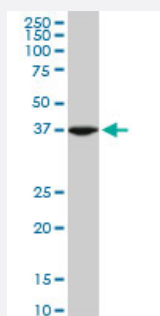


ASNA1 monoclonal antibody (M03), clone 2H3

Catalog # H00000439-M03

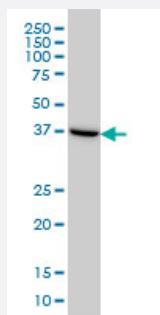
Size 100 ug

Applications



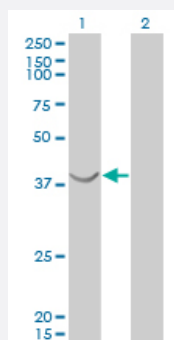
Western Blot (Cell lysate)

ASNA1 monoclonal antibody (M03), clone 2H3. Western Blot analysis of ASNA1 expression in PC-12 (Cat # L012V1).



Western Blot (Cell lysate)

ASNA1 monoclonal antibody (M03), clone 2H3 Western Blot analysis of ASNA1 expression in HeLa (Cat # L013V1).

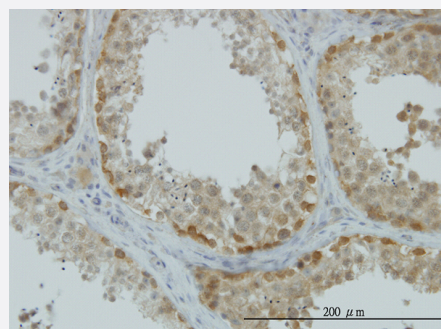


Western Blot (Transfected lysate)

Western Blot analysis of ASNA1 expression in transfected 293T cell line by ASNA1 monoclonal antibody (M03), clone 2H3.

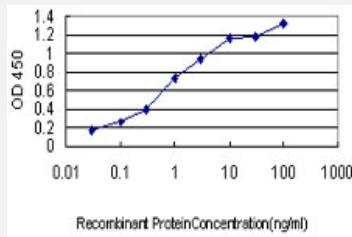
Lane 1: ASNA1 transfected lysate(38.8 KDa).

Lane 2: Non-transfected lysate.



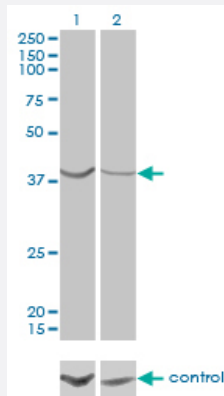
Immunohistochemistry (Formalin/PFA-fixed paraffin-embedded sections)

Immunoperoxidase of monoclonal antibody to ASNA1 on formalin-fixed paraffin-embedded human testis. [antibody concentration 0.5 ug/ml]



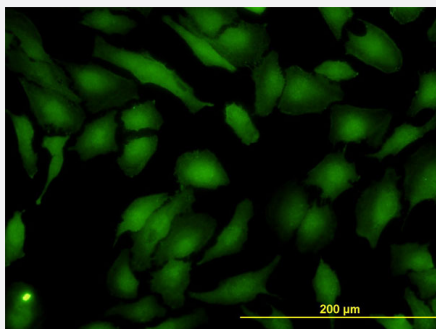
Sandwich ELISA (Recombinant protein)

Detection limit for recombinant GST tagged ASNA1 is approximately 0.03ng/ml as a capture antibody.



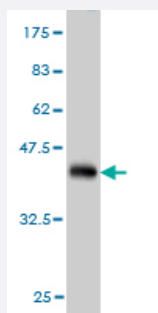
RNAi Knockdown (Antibody validated)

Western blot analysis of ASNA1 over-expressed 293 cell line, cotransfected with ASNA1 Validated Chimera RNAi (Cat # H00000439-R01V) (Lane 2) or non-transfected control (Lane 1). Blot probed with ASNA1 monoclonal antibody (M03), clone 2H3 (Cat # H00000439-M03). GAPDH (36.1 kDa) used as specificity and loading control.



Immunofluorescence

Immunofluorescence of monoclonal antibody to ASNA1 on HeLa cell. [antibody concentration 10 ug/ml]



Western Blot detection against Immunogen (37.84 KDa) .

Specification

Product Description

Mouse monoclonal antibody raised against a partial recombinant ASNA1.

Immunogen

ASNA1 (NP_004308, 239 a.a. ~ 348 a.a) partial recombinant protein with GST tag. MW of the GST tag alone is 26 KDa.

Sequence	PEQTTFCVCIAEFLSLYETERLIQELAKCKIDTHNIVNQLVFPDPEKPCKMCEARHKIQAKYLDQM EDLYEDFHMVKLPLLPHEVRGADKVNTFSALLLEPYKPPSAQ
Host	Mouse
Reactivity	Human, Rat
Interspecies Antigen Sequence	Mouse (99); Rat (99)
Isotype	IgG1 Kappa
Quality Control Testing	Antibody Reactive Against Recombinant Protein. Western Blot detection against Immunogen (37.84 KDa) .
Storage Buffer	In 1x PBS, pH 7.4
Storage Instruction	Store at -20°C or lower. Aliquot to avoid repeated freezing and thawing.

Applications

- Western Blot (Cell lysate)

ASNA1 monoclonal antibody (M03), clone 2H3. Western Blot analysis of ASNA1 expression in PC-12 (Cat # L012V1).

[Protocol Download](#)

- Western Blot (Cell lysate)

ASNA1 monoclonal antibody (M03), clone 2H3 Western Blot analysis of ASNA1 expression in HeLa (Cat # L013V1).

[Protocol Download](#)

- Western Blot (Transfected lysate)

Western Blot analysis of ASNA1 expression in transfected 293T cell line by ASNA1 monoclonal antibody (M03), clone 2H3.

Lane 1: ASNA1 transfected lysate(38.8 KDa).

Lane 2: Non-transfected lysate.

[Protocol Download](#)

- Western Blot (Recombinant protein)

[Protocol Download](#)

- Immunohistochemistry (Formalin/PFA-fixed paraffin-embedded sections)

Immunoperoxidase of monoclonal antibody to ASNA1 on formalin-fixed paraffin-embedded human testis. [antibody concentration 0.5 ug/ml]

[Protocol Download](#)

- Sandwich ELISA (Recombinant protein)

Detection limit for recombinant GST tagged ASNA1 is approximately 0.03ng/ml as a capture antibody.

[Protocol Download](#)

- ELISA

- RNAi Knockdown (Antibody validated)

Western blot analysis of ASNA1 over-expressed 293 cell line, cotransfected with ASNA1 Validated Chimera RNAi (Cat # H00000439-R01V) (Lane 2) or non-transfected control (Lane 1). Blot probed with ASNA1 monoclonal antibody (M03), clone 2H3 (Cat # H00000439-M03). GAPDH (36.1 kDa) used as specificity and loading control.

[Protocol Download](#)

- Immunofluorescence

Immunofluorescence of monoclonal antibody to ASNA1 on HeLa cell. [antibody concentration 10 ug/ml]

Gene Info — ASNA1

Entrez GeneID [439](#)

GeneBank Accession# [NM_004317](#)

Protein Accession# [NP_004308](#)

Gene Name ASNA1

Gene Alias ARSA-I, ARSA1, MGC3821

Gene Description arsA arsenite transporter, ATP-binding, homolog 1 (bacterial)

Omim ID [601913](#)

Gene Ontology [Hyperlink](#)

Gene Summary ASNA1 is the human homolog of the bacterial arsA gene. In E. coli, ArsA ATPase is the catalytic component of a multisubunit oxyanion pump that is responsible for resistance to arsenicals and antimetabolites.[supplied by OMIM]

Other Designations arsA arsenite transporter, ATP-binding, homolog 1

Publication Reference

- [Asna1/TRC40 that mediates membrane insertion of tail-anchored proteins is required for efficient release of Herpes simplex virus 1 virions.](#)

Ott M, Marques D, Funk C, Bailer SM.

Virology Journal 2016 Oct; 13(1):175.

Application: WB-Tr, Human, HeLa cells

- [A precursor specific role for Hsp40/Hsc70 during tail-anchored protein integration at the endoplasmic reticulum.](#)

Rabu C, Wipf P, Brodsky JL, High S.

The Journal of Biological Chemistry 2008 Jul; 283(41):27504.

Application: WB, Human, HeLa cells