

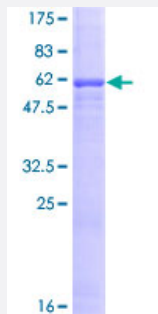
Full-Length

ASGR1 (Human) Recombinant Protein (P01)

Catalog # H00000432-P01

Size 25 ug, 10 ug

Applications



Specification

Product Description

Human ASGR1 full-length ORF (AAH32130, 1 a.a. - 291 a.a.) recombinant protein with GST-tag at N-terminal.

Sequence

MTKEYQDLQHLDN EESDHHQLRKGP PPPQPLLQRLCSGPRLLLLSLGLSLLLLVVVCVIGSQNSQ
LQEELRGLRETF SNFTASTE AQVKGLSTQGGNVGRKMKSLESQLEKQKDLSEDHSSLLLVHKQ
FVSDLRSLSCQMAALQNGSERTCCPVNWVEHERSCYWFSRSGKAWADADNYCRLEDAHLVV
VTSWEEQKFVQHHIGPVNTWMGLHDQNGPWKWDGTDYETGFKNWRPEQPDDWYGHGLGGG
EDCAHFTDDGRWNDDVCQRPYRWVCETELDKASQEPPLL

Host

Wheat Germ (in vitro)

Theoretical MW (kDa)

57.75

Preparation Method

[in vitro wheat germ expression system](#)

Purification

Glutathione Sepharose 4 Fast Flow

Quality Control Testing

12.5% SDS-PAGE Stained with Coomassie Blue.

Storage Buffer

50 mM Tris-HCl, 10 mM reduced Glutathione, pH=8.0 in the elution buffer.

Storage Instruction

Store at -80°C. Aliquot to avoid repeated freezing and thawing.

Note

Best use within three months from the date of receipt of this protein.

Applications

- Enzyme-linked Immunoabsorbent Assay
- Western Blot (Recombinant protein)
- Antibody Production
- Protein Array

Gene Info — ASGR1

Entrez GeneID [432](#)

GeneBank Accession# [BC032130](#)

Protein Accession# [AAH32130](#)

Gene Name ASGR1

Gene Alias HL-1, ASGPR, ASGPR1, CLEC4H1

Gene Description asialoglycoprotein receptor 1

Omim ID [108360](#)

Gene Ontology [Hyperlink](#)

Gene Summary Partially deglycosylated plasma glycoproteins and immunoglobulin IgA2 allotypes are efficiently and specifically removed from circulation by a receptor-mediated process. The asialoglycoprotein receptor binds to desialylated (galactosyl-terminal) glycoproteins. It transports these glycoproteins via a series of membrane vesicles and tubules to an acidic-sorting organelle where the receptor and ligand dissociate. Then the receptor is recycled back to the cell surface and the ligand is transported to the lysosomes for degradation. [provided by RefSeq]

Other Designations C-type lectin domain family 4, member H1|hepatic lectin H1