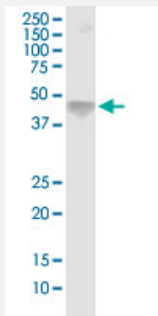


ASGR1 monoclonal antibody (M03), clone 1G4

Catalog # H00000432-M03

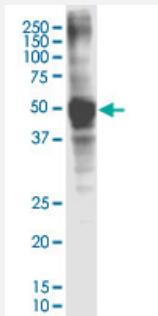
Size 100 ug

Applications



Western Blot (Tissue lysate)

ASGR1 monoclonal antibody (M03), clone 1G4. Western Blot analysis of ASGR1 expression in human liver.



Western Blot (Cell lysate)

ASGR1 monoclonal antibody (M03), clone 1G4. Western Blot analysis of ASGR1 expression in HepG2.

Specification

Product Description	Mouse monoclonal antibody raised against human ASGR1.
Immunogen	A synthetic peptide corresponding to human ASGR1
Sequence	GRKMKSLESQLEKQQKDLSEDHSSLLLHVKQFVSDLRSLSCQMAALQGNGC
Host	Mouse
Reactivity	Human
Isotype	IgG1 Kappa
Quality Control Testing	Antibody Reactive Against Recombinant Protein.

Storage Buffer

In 1x PBS, pH 7.4

Storage Instruction

Store at -20°C or lower. Aliquot to avoid repeated freezing and thawing.

Applications

- Western Blot (Tissue lysate)

ASGR1 monoclonal antibody (M03), clone 1G4. Western Blot analysis of ASGR1 expression in human liver.

[Protocol Download](#)

- Western Blot (Cell lysate)

ASGR1 monoclonal antibody (M03), clone 1G4. Western Blot analysis of ASGR1 expression in HepG2.

[Protocol Download](#)

- ELISA

Gene Info — ASGR1

Entrez GeneID[432](#)**GeneBank Accession#**[NM_001671.4](#)**Protein Accession#**[NP_001662.1](#)**Gene Name**

ASGR1

Gene Alias

HL-1, ASGPR, ASGPR1, CLEC4H1

Gene Description

asialoglycoprotein receptor 1

Omim ID[108360](#)**Gene Ontology**[Hyperlink](#)**Gene Summary**

Partially deglycosylated plasma glycoproteins and immunoglobulin IgA2 allotypes are efficiently and specifically removed from circulation by a receptor-mediated process. The asialoglycoprotein receptor binds to desialylated (galactosyl-terminal) glycoproteins. It transports these glycoproteins via a series of membrane vesicles and tubules to an acidic-sorting organelle where the receptor and ligand dissociate. Then the receptor is recycled back to the cell surface and the ligand is transported to the lysosomes for degradation. [provided by RefSeq]

Other Designations

C-type lectin domain family 4, member H1|hepatic lectin H1