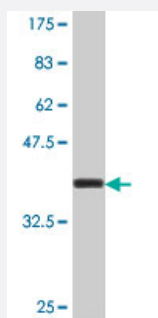


# ARSE polyclonal antibody (A01)

Catalog # H00000415-A01

Size 50 uL

## Applications



Western Blot detection against Immunogen (37.11 kDa) .

## Specification

<b>Product Description</b>	Mouse polyclonal antibody raised against a partial recombinant ARSE.
<b>Immunogen</b>	ARSE (NP_000038, 490 a.a. ~ 589 a.a) partial recombinant protein with GST tag.
<b>Sequence</b>	GACYGRKVCPCFGEKVVHDPPLLFDLSRDPSETHILTPASEPVFYQVMERVQQAVWEHQRTLS PVPLQLDRLGNWRPWLQPCCGPFPLCWCLREDDPQ
<b>Host</b>	Mouse
<b>Reactivity</b>	Human
<b>Interspecies Antigen Sequence</b>	Rat (41)
<b>Quality Control Testing</b>	Antibody Reactive Against Recombinant Protein. Western Blot detection against Immunogen (37.11 kDa) .
<b>Storage Buffer</b>	50 % glycerol
<b>Storage Instruction</b>	Store at -20°C or lower. Aliquot to avoid repeated freezing and thawing.

## Applications

- Western Blot (Recombinant protein)

[Protocol Download](#)

- ELISA

## Gene Info — ARSE

Entrez GeneID [415](#)

GeneBank Accession# [NM\\_000047](#)

Protein Accession# [NP\\_000038](#)

Gene Name ARSE

Gene Alias CDPX, CDPX1, CDPXR, MGC163310

Gene Description arylsulfatase E (chondrodysplasia punctata 1)

Omim ID [300180 302950](#)

Gene Ontology [Hyperlink](#)

**Gene Summary** Arylsulfatase E is a member of the sulfatase family. It is glycosylated postrationally and localized to the golgi apparatus. Sulfatases are essential for the correct composition of bone and cartilage matrix. X-linked chondrodysplasia punctata, a disease characterized by abnormalities in cartilage and bone development, has been linked to mutations in this gene. [provided by RefSeq]

**Other Designations** OTTHUMP00000022851|arylsulfatase E|chondrodysplasia punctata 1