

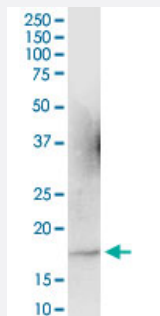
MaxPab®

ARL2 purified MaxPab mouse polyclonal antibody (B01P)

Catalog # H00000402-B01P

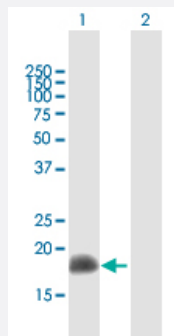
Size 50 ug

Applications



Western Blot (Tissue lysate)

ARL2 MaxPab polyclonal antibody. Western Blot analysis of ARL2 expression in rat brain.



Western Blot (Transfected lysate)

Western Blot analysis of ARL2 expression in transfected 293T cell line ([H00000402-T01](#)) by ARL2 MaxPab polyclonal antibody.

Lane 1: ARL2 transfected lysate(20.24 KDa).

Lane 2: Non-transfected lysate.

Specification

Product Description	Mouse polyclonal antibody raised against a full-length human ARL2 protein.
Immunogen	ARL2 (NP_001658.1, 1 a.a. ~ 184 a.a) full-length human protein.
Sequence	MGLLTILKKMKQKERELRLMLGLDNAGKTTILKKFNGEDIDTISPTLGFNIKTLEHRGFKLNWDVG GQKSLRSYWRNYFESTDGLIWWVDSADRQRMQDCQRELQSLLVEERLAGATLLIFANKQDLPGA LSSNAIREVLELDSIRSHHWCIQGCSAVTGENLLPGIDWLLDDISSRIFTAD
Host	Mouse
Reactivity	Human, Rat

Interspecies Antigen Sequence	Mouse (96)
Quality Control Testing	Antibody reactive against mammalian transfected lysate.
Storage Buffer	In 1x PBS, pH 7.4
Storage Instruction	Store at -20°C or lower. Aliquot to avoid repeated freezing and thawing.

Applications

- Western Blot (Tissue lysate)

ARL2 MaxPab polyclonal antibody. Western Blot analysis of ARL2 expression in rat brain.

[Protocol Download](#)

- Western Blot (Transfected lysate)

Western Blot analysis of ARL2 expression in transfected 293T cell line ([H00000402-T01](#)) by ARL2 MaxPab polyclonal antibody.

Lane 1: ARL2 transfected lysate(20.24 KDa).

Lane 2: Non-transfected lysate.

[Protocol Download](#)

Gene Info — ARL2

Entrez GeneID	402
GeneBank Accession#	NM_001667.1
Protein Accession#	NP_001658.1
Gene Name	ARL2
Gene Alias	ARFL2
Gene Description	ADP-ribosylation factor-like 2
Omim ID	601175
Gene Ontology	Hyperlink
Gene Summary	This gene encodes a small GTP-binding protein of the RAS superfamily which functions as an AD P-ribosylation factor (ARF). The encoded protein is one of a functionally distinct group of ARF-like genes. [provided by RefSeq

Other Designations

-