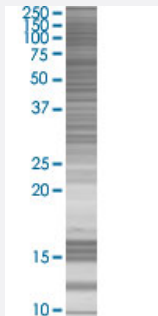


# PHOX2A 293T Cell Transient Overexpression Lysate(Denatured)

Catalog # H00000401-T01

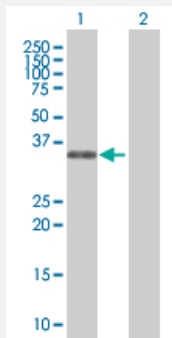
Size 100 uL

## Applications



### SDS-PAGE Gel

PHOX2A transfected lysate.



### Western Blot

Lane 1: PHOX2A transfected lysate ( 29.7 KDa)

Lane 2: Non-transfected lysate.

## Specification

**Transfected Cell Line** 293T

**Plasmid** pCMV-PHOX2A full-length

**Host** Human

**Theoretical MW (kDa)** 29.7

**Quality Control Testing** Transient overexpression cell lysate was tested with Anti-PHOX2A antibody ([H00000401-B01](#)) by Western Blots.  
SDS-PAGE Gel  
PHOX2A transfected lysate.  
Western Blot  
Lane 1: PHOX2A transfected lysate ( 29.7 KDa)  
Lane 2: Non-transfected lysate.

**Storage Buffer**

1X Sample Buffer (50 mM Tris-HCl, 2% SDS, 10% glycerol, 300 mM 2-mercaptoethanol, 0.01% Bromophenol blue)

**Storage Instruction**

Store at -80°C. Aliquot to avoid repeated freezing and thawing.

## Applications

- Western Blot

## Gene Info — PHOX2A

**Entrez GeneID**[401](#)**GeneBank Accession#**[NM\\_005169.2](#)**Protein Accession#**[-](#)**Gene Name**

PHOX2A

**Gene Alias**

ARIX, CFEM2, FEOM2, MGC52227, NCAM2, PMX2A

**Gene Description**

paired-like homeobox 2a

**Omim ID**[602078 602753](#)**Gene Ontology**[Hyperlink](#)**Gene Summary**

The protein encoded by this gene contains a paired-like homeodomain most similar to that of the *Drosophila aristaless* gene product. The encoded protein plays a central role in development of the autonomic nervous system. It regulates the expression of tyrosine hydroxylase and dopamine beta-hydroxylase, two catecholaminergic biosynthetic enzymes essential for the differentiation and maintenance of the noradrenergic neurotransmitter phenotype. The encoded protein has also been shown to regulate transcription of the alpha3 nicotinic acetylcholine receptor gene. Mutations in this gene have been associated with autosomal recessive congenital fibrosis of the extraocular muscles. [provided by RefSeq]

**Other Designations**

aristaless homeobox homolog|arix homeodomain protein

## Disease

- [Sudden Infant Death](#)