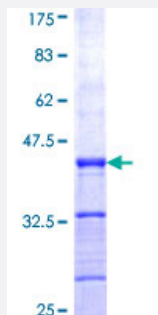


PHOX2A (Human) Recombinant Protein (Q01)

Catalog # H00000401-Q01

Size 25 ug, 10 ug

Applications



Specification

Product Description	Human PHOX2A partial ORF (NP_005160, 1 a.a. - 90 a.a.) recombinant protein with GST-tag at N-terminal.
Sequence	MDSYLNSYDSCVAAMEASAYGDFGACSQPGGFQYSPLRPAFPAAGPPCPALGSSNCALGALRDHQPAPYSAVPYKFFPEPSGLHEKRRKQ
Host	Wheat Germ (in vitro)
Theoretical MW (kDa)	35.64
Preparation Method	in vitro wheat germ expression system
Purification	Glutathione Sepharose 4 Fast Flow
Quality Control Testing	12.5% SDS-PAGE Stained with Coomassie Blue.
Storage Buffer	50 mM Tris-HCl, 10 mM reduced Glutathione, pH=8.0 in the elution buffer.
Storage Instruction	Store at -80°C. Aliquot to avoid repeated freezing and thawing.
Note	Best use within three months from the date of receipt of this protein.

Applications

- Enzyme-linked Immunoabsorbent Assay
- Western Blot (Recombinant protein)
- Antibody Production
- Protein Array

Gene Info — PHOX2A

Entrez GeneID [401](#)

GeneBank Accession# [NM_005169](#)

Protein Accession# [NP_005160](#)

Gene Name PHOX2A

Gene Alias ARX, CFEOM2, FEOM2, MGC52227, NCAM2, PMX2A

Gene Description paired-like homeobox 2a

Omim ID [602078 602753](#)

Gene Ontology [Hyperlink](#)

Gene Summary The protein encoded by this gene contains a paired-like homeodomain most similar to that of the Drosophila aristaless gene product. The encoded protein plays a central role in development of the autonomic nervous system. It regulates the expression of tyrosine hydroxylase and dopamine beta-hydroxylase, two catecholaminergic biosynthetic enzymes essential for the differentiation and maintenance of the noradrenergic neurotransmitter phenotype. The encoded protein has also been shown to regulate transcription of the alpha3 nicotinic acetylcholine receptor gene. Mutations in this gene have been associated with autosomal recessive congenital fibrosis of the extraocular muscles. [provided by RefSeq]

Other Designations aristaless homeobox homolog|arix homeodomain protein

Disease

- [Sudden Infant Death](#)