

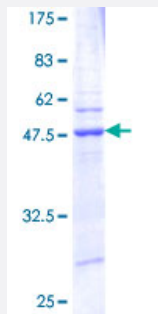
Full-Length

ARL1 (Human) Recombinant Protein (P01)

Catalog # H00000400-P01

Size 25 ug, 10 ug

Applications



Specification

Product Description	Human ARL1 full-length ORF (AAH07000.1, 1 a.a. - 181 a.a.) recombinant protein with GST-tag at N-terminal.
Sequence	MGGFFSSIFSSLFGTREMRILILGLDGAGKTTILYRLQVGEVVTIPTIGFNVETVYKNLKFQVWDLG GQTSIRPYWRCYYSNDAVYVVDSCDRDRIGISKSELVAMLEEEELRKAILVVFANKQDMEQAMT SSEMANSGLPALKDRKWQIFKTSATKGTGLDEAMEWLVELKSRQ
Host	Wheat Germ (in vitro)
Theoretical MW (kDa)	45.54
Interspecies Antigen Sequence	Mouse (99); Rat (99)
Preparation Method	in vitro wheat germ expression system
Purification	Glutathione Sepharose 4 Fast Flow
Quality Control Testing	12.5% SDS-PAGE Stained with Coomassie Blue.
Storage Buffer	50 mM Tris-HCl, 10 mM reduced Glutathione, pH=8.0 in the elution buffer.
Storage Instruction	Store at -80°C. Aliquot to avoid repeated freezing and thawing.

Note

Best use within three months from the date of receipt of this protein.

Applications

- Enzyme-linked Immunoabsorbent Assay
- Western Blot (Recombinant protein)
- Antibody Production
- Protein Array

Gene Info — ARL1

Entrez GeneID [400](#)

GeneBank Accession# [BC007000.1](#)

Protein Accession# [AAH07000.1](#)

Gene Name ARL1

Gene Alias ARFL1

Gene Description ADP-ribosylation factor-like 1

Omim ID [603425](#)

Gene Ontology [Hyperlink](#)

Gene Summary The protein encoded by this gene belongs to the ARL (ADP-ribosylation factor-like) family of proteins, which are structurally related to ADP-ribosylation factors (ARFs). ARFs, described as activators of cholera toxin (CT) ADP-ribosyltransferase activity, regulate intracellular vesicular membrane trafficking, and stimulate a phospholipase D (PLD) isoform. Although, ARL proteins were initially thought not to activate CT or PLD, later work showed that they are weak stimulators of PLD and CT in a phospholipid dependent manner. [provided by RefSeq]

Other Designations -