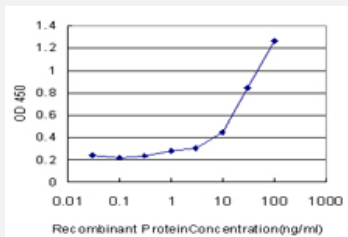


# RHOH monoclonal antibody (M03), clone 3D3

Catalog # H00000399-M03

Size 100 ug

## Applications



### Sandwich ELISA (Recombinant protein)

Detection limit for recombinant GST tagged RHOH is approximately 1ng/ml as a capture antibody.

## Specification

<b>Product Description</b>	Mouse monoclonal antibody raised against a full length recombinant RHOH.
<b>Immunogen</b>	RHOH (AAH14261.1, 1 a.a. ~ 191 a.a) full-length recombinant protein with GST tag. MW of the GST tag alone is 26 KDa.
<b>Sequence</b>	MLSSIKCVLVGDSAVGKTSLLVRFTSETFPEAYKPTVYENTGVDVFM DGIQISLGLWDTAGNDAFR SIRPLSYQQADVVL MCYSVANHNSFLNLKKNKWIGEIRSNLPCTPVLVVVTQTDQREMGP HRASCV NAMEGKKLAQDVRAKGYLECSALSNRGVQQVFECVRTAVNQARRRNRRLFSINECKIF
<b>Host</b>	Mouse
<b>Reactivity</b>	Human
<b>Interspecies Antigen Sequence</b>	Mouse (96); Rat (96)
<b>Isotype</b>	IgG2a Kappa
<b>Quality Control Testing</b>	Antibody Reactive Against Recombinant Protein.
<b>Storage Buffer</b>	In 1x PBS, pH 7.4
<b>Storage Instruction</b>	Store at -20°C or lower. Aliquot to avoid repeated freezing and thawing.

## Applications

- Sandwich ELISA (Recombinant protein)

Detection limit for recombinant GST tagged RHOH is approximately 1ng/ml as a capture antibody.

[Protocol Download](#)

- ELISA

## Gene Info — RHOH

Entrez GeneID	<a href="#">399</a>
GeneBank Accession#	<a href="#">BC014261</a>
Protein Accession#	<a href="#">AAH14261.1</a>
Gene Name	RHOH
Gene Alias	ARHH, TTF
Gene Description	ras homolog gene family, member H
Omim ID	<a href="#">602037</a>
Gene Ontology	<a href="#">Hyperlink</a>
Gene Summary	The protein encoded by this gene is a member of the Ras superfamily of small GTPases. Expression of a chimeric transcript of LAZ3 and this gene has been reported as a result of the translocation t(3;4) in non-Hodgkin's lymphomas. This gene encodes a small G-like protein, and unlike most other small G proteins which are expressed ubiquitously, this gene is transcribed only in hemopoietic cells. [provided by RefSeq]
Other Designations	TTF, translocation three four rho-related GTP-binding protein

## Pathway

- [Leukocyte transendothelial migration](#)

## Disease

- [Tobacco Use Disorder](#)