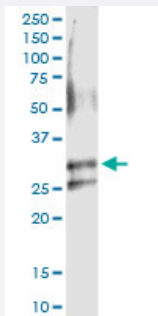


ARHGDIA (Human) IP-WB Antibody Pair

Catalog # H00000396-PW1

Size 1 Set

Applications



Immunoprecipitation of ARHGDIA transfected lysate using rabbit polyclonal anti-ARHGDIA and Protein A Magnetic Bead ([U0007](#)), and immunoblotted with mouse purified polyclonal anti-ARHGDIA.

Specification

Product Description	This IP-WB antibody pair set comes with one antibody for immunoprecipitation and another to detect the precipitated protein in western blot.
Reactivity	Human
Quality Control Testing	Immunoprecipitation-Western Blot (IP-WB) Immunoprecipitation of ARHGDIA transfected lysate using rabbit polyclonal anti-ARHGDIA and Prote in A Magnetic Bead (U0007), and immunoblotted with mouse purified polyclonal anti-ARHGDIA.
Supplied Product	Antibody pair set content: 1. Antibody pair for IP: rabbit polyclonal anti-ARHGDIA (300 ul) 2. Antibody pair for WB: mouse purified polyclonal anti-ARHGDIA (50 ug)
Storage Instruction	Store reagents of the antibody pair set at -20°C or lower. Please aliquot to avoid repeated freeze tha w cycle. Reagents should be returned to -20°C storage immediately after use.

Applications

- Immunoprecipitation-Western Blot

[Protocol Download](#)

Gene Info — ARHGDIA

Entrez GeneID [396](#)**Gene Name** ARHGDIA**Gene Alias** GDIA1, MGC117248, RHOGDI, RHOGDI-1**Gene Description** Rho GDP dissociation inhibitor (GDI) alpha**Omim ID** [601925](#)**Gene Ontology** [Hyperlink](#)

Gene Summary Aplysia Ras-related homologs (ARHs), also called Rho genes, belong to the RAS gene superfamily encoding small guanine nucleotide exchange (GTP/GDP) factors. The ARH proteins may be kept in the inactive, GDP-bound state by interaction with GDP dissociation inhibitors, such as ARHGDIA (Leffers et al., 1993 [PubMed 8262133]).[supplied by OMIM]

Other Designations -

Pathway

- [Neurotrophin signaling pathway](#)