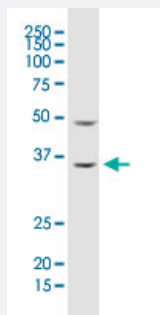


# ARHGDIA monoclonal antibody (M02), clone 1G5-2F3

Catalog # H00000396-M02

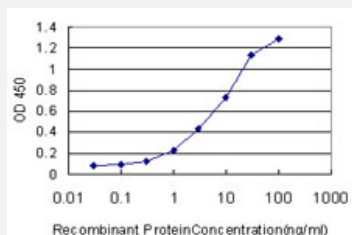
Size 100 ug

## Applications



### Western Blot (Tissue lysate)

ARHGDIA monoclonal antibody (M02), clone 1G5-2F3. Western Blot analysis of ARHGDIA expression in human ovarian cancer.



### Sandwich ELISA (Recombinant protein)

Detection limit for recombinant GST tagged ARHGDIA is approximately 0.3ng/ml as a capture antibody.



Western Blot detection against Immunogen (48.18 KDa) .

## Specification

### Product Description

Mouse monoclonal antibody raised against a full length recombinant ARHGDIA.

Immunogen	ARHGDIA (AAH16031, 1 a.a. ~ 204 a.a) full-length recombinant protein with GST tag. MW of the GST tag alone is 26 KDa.
Sequence	MAEQEPTAEQLAQIAAENEDEHSVNYKPPAQKSIQEIQLDKDDESLRKYKEALLGRVAVSADPNVPNVVVTGLTLVCSSAPGPLELDLTGDLSEFKKQSFVLKEGVEYRIKISFRVNREIVSGMKYIQHTYRKGVKIDKTDYMGVSGYPRAEEYEFLTPVEEAPKGMLARGSYSIKSRFTDDDKTDHLSWEWNLTIKKDWKD
Host	Mouse
Reactivity	Human
Isotype	IgG1 Kappa
Quality Control Testing	Antibody Reactive Against Recombinant Protein. Western Blot detection against Immunogen (48.18 KDa) .
Storage Buffer	In 1x PBS, pH 7.4
Storage Instruction	Store at -20°C or lower. Aliquot to avoid repeated freezing and thawing.

## Applications

- Western Blot (Tissue lysate)

ARHGDIA monoclonal antibody (M02), clone 1G5-2F3. Western Blot analysis of ARHGDIA expression in human ovarian cancer.

[Protocol Download](#)

- Western Blot (Recombinant protein)

[Protocol Download](#)

- Sandwich ELISA (Recombinant protein)

Detection limit for recombinant GST tagged ARHGDIA is approximately 0.3ng/ml as a capture antibody.

[Protocol Download](#)

- ELISA

## Gene Info — ARHGDIA

Entrez GeneID [396](#)

GeneBank Accession# [BC016031](#)

Protein Accession#	<a href="#">AAH16031</a>
Gene Name	ARHGDI
Gene Alias	GDIA1, MGC117248, RHOGDI, RHOGDI-1
Gene Description	Rho GDP dissociation inhibitor (GDI) alpha
Omim ID	<a href="#">601925</a>
Gene Ontology	<a href="#">Hyperlink</a>
Gene Summary	Aplysia Ras-related homologs (ARHs), also called Rho genes, belong to the RAS gene superfamily encoding small guanine nucleotide exchange (GTP/GDP) factors. The ARH proteins may be kept in the inactive, GDP-bound state by interaction with GDP dissociation inhibitors, such as ARH GDIA (Leffers et al., 1993 [PubMed 8262133]).[supplied by OMIM]
Other Designations	-

## Publication Reference

- [Comparative proteomic analysis on human L-02 liver cells treated with varying concentrations of trichloroethylene.](#)

Liu J, Huang H, Xing X, Xi R, Zhuang Z, Yuan J, Yang F, Zhao J.

Toxicology and Industrial Health 2007 Mar; 23(2):91.

Application: WB-Ce, Human, L-02 liver cells

## Pathway

- [Neurotrophin signaling pathway](#)