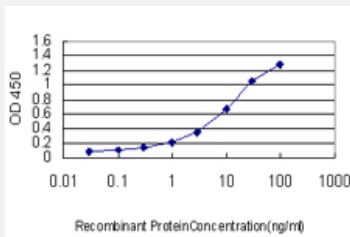


ARHGDIA monoclonal antibody (M01), clone 1E12-2G11

Catalog # H00000396-M01

Size 100 ug

Applications



Sandwich ELISA (Recombinant protein)

Detection limit for recombinant GST tagged ARHGDIA is approximately 0.3ng/ml as a capture antibody.

Specification

Product Description	Mouse monoclonal antibody raised against a full length recombinant ARHGDIA.
Immunogen	ARHGDIA (AAH16031, 1 a.a. ~ 204 a.a) full-length recombinant protein with GST tag. MW of the GST tag alone is 26 KDa.
Sequence	MAEQEPTAEQLAQIAAENEDEHSVNYKPPAQKSIQEIQELDKDDESLRKYKEALLGRVAVSADPNVPNVVVTGLTLCSSAPGPLELDTGDLSEFKKQSFVLKEGVEYRIKISFRVNREIVSGMKYIQT YRKGVKIDKTDYMGVSGYPRAEEYEFLTPVEEAPKGM LARGSYSIKSRFTDDDKTDHLSWEWNLT IKKDWKD
Host	Mouse
Reactivity	Human
Isotype	IgG1 Kappa
Quality Control Testing	Antibody Reactive Against Recombinant Protein.
Storage Buffer	In 1x PBS, pH 7.4
Storage Instruction	Store at -20°C or lower. Aliquot to avoid repeated freezing and thawing.

Applications

- Sandwich ELISA (Recombinant protein)

Detection limit for recombinant GST tagged ARHGDIA is approximately 0.3ng/ml as a capture antibody.

[Protocol Download](#)

- ELISA

Gene Info — ARHGDIA

Entrez GeneID [396](#)

GeneBank Accession# [BC016031](#)

Protein Accession# [AAH16031](#)

Gene Name ARHGDIA

Gene Alias GDIA1, MGC117248, RHOGDI, RHOGDI-1

Gene Description Rho GDP dissociation inhibitor (GDI) alpha

Omim ID [601925](#)

Gene Ontology [Hyperlink](#)

Gene Summary Aplysia Ras-related homologs (ARHs), also called Rho genes, belong to the RAS gene superfamily encoding small guanine nucleotide exchange (GTP/GDP) factors. The ARH proteins may be kept in the inactive, GDP-bound state by interaction with GDP dissociation inhibitors, such as ARHGDIA (Leffers et al., 1993 [PubMed 8262133]).[supplied by OMIM]

Other Designations -

Pathway

- [Neurotrophin signaling pathway](#)