

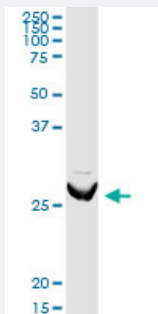
MaxPab®

# ARHGDIA MaxPab rabbit polyclonal antibody (D03)

Catalog # H00000396-D03

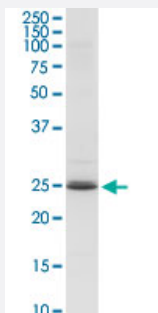
Size 100 uL

## Applications



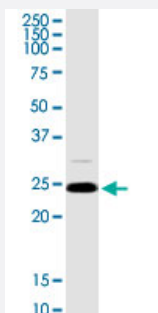
### Western Blot (Tissue lysate)

ARHGDIA MaxPab rabbit polyclonal antibody. Western Blot analysis of ARHGDIA expression in mouse stomach.



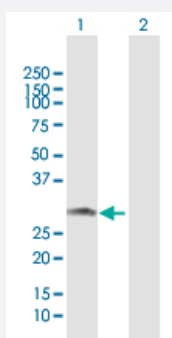
### Western Blot (Tissue lysate)

ARHGDIA MaxPab rabbit polyclonal antibody. Western Blot analysis of ARHGDIA expression in human spleen.



### Western Blot (Cell lysate)

ARHGDIA MaxPab rabbit polyclonal antibody. Western Blot analysis of ARHGDIA expression in Jurkat.

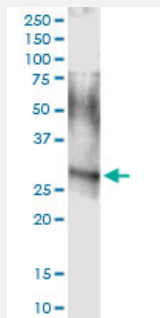


### Western Blot (Transfected lysate)

Western Blot analysis of ARHGDIA expression in transfected 293T cell line ([H00000396-T03](#)) by ARHGDIA MaxPab polyclonal antibody.

Lane 1: ARHGDIA transfected lysate(22.55 KDa).

Lane 2: Non-transfected lysate.



## Immunoprecipitation

Immunoprecipitation of ARHGDIA transfected lysate using anti-ARHGDIA MaxPab rabbit polyclonal antibody and Protein A Magnetic Bead, and immunoblotted with ARHGDIA MaxPab mouse polyclonal antibody (B01) ([H00000396-B01](#)).

## Specification

<b>Product Description</b>	Rabbit polyclonal antibody raised against a full-length human ARHGDIA protein.
<b>Immunogen</b>	ARHGDIA (AAH16031.1, 1 a.a. ~ 204 a.a) full-length human protein.
<b>Sequence</b>	MAEQEPTAEQLAQIAAENEDEHSVNYKPPAQKSIQEIQLDKDDESLRKYKEALLGRVAVSADP NVPNVVVTGLTLCSSAPGPLELDLTGDLSEFKKQSFVLKEGVEYRIKISFRVNREIVSGMKYIQHT YRKGVKIDKTDYMGVSGYPRAEYEFLTPVEEAPKGMLARGSYSIKSRFTDDDKTDHLSWEWNLT IKKDWKD
<b>Host</b>	Rabbit
<b>Reactivity</b>	Human, Mouse
<b>Quality Control Testing</b>	Antibody reactive against mammalian transfected lysate.
<b>Storage Buffer</b>	No additive
<b>Storage Instruction</b>	Store at -20°C or lower. Aliquot to avoid repeated freezing and thawing.

## Applications

- Western Blot (Tissue lysate)

ARHGDIA MaxPab rabbit polyclonal antibody. Western Blot analysis of ARHGDIA expression in mouse stomach.

[Protocol Download](#)

- Western Blot (Tissue lysate)

ARHGDIA MaxPab rabbit polyclonal antibody. Western Blot analysis of ARHGDIA expression in human spleen.

[Protocol Download](#)

- Western Blot (Cell lysate)

ARHGDI MaxPab rabbit polyclonal antibody. Western Blot analysis of ARHGDI expression in Jurkat.

[Protocol Download](#)

- Western Blot (Transfected lysate)

Western Blot analysis of ARHGDI expression in transfected 293T cell line ([H00000396-T03](#)) by ARHGDI MaxPab polyclonal antibody.

Lane 1: ARHGDI transfected lysate(22.55 KDa).

Lane 2: Non-transfected lysate.

[Protocol Download](#)

- Immunoprecipitation

Immunoprecipitation of ARHGDI transfected lysate using anti-ARHGDI MaxPab rabbit polyclonal antibody and Protein A Magnetic Bead, and immunoblotted with ARHGDI MaxPab mouse polyclonal antibody (B01) ([H00000396-B01](#)).

[Protocol Download](#)

## Gene Info — ARHGDI

Entrez GeneID [396](#)

GeneBank Accession# [BC016031](#)

Protein Accession# [AAH16031.1](#)

Gene Name ARHGDI

Gene Alias GDIA1, MGC117248, RHOGDI, RHOGDI-1

Gene Description Rho GDP dissociation inhibitor (GDI) alpha

Omim ID [601925](#)

Gene Ontology [Hyperlink](#)

**Gene Summary** Aplysia Ras-related homologs (ARHs), also called Rho genes, belong to the RAS gene superfamily encoding small guanine nucleotide exchange (GTP/GDP) factors. The ARH proteins may be kept in the inactive, GDP-bound state by interaction with GDP dissociation inhibitors, such as ARHGDI (Leffers et al., 1993 [PubMed 8262133]).[supplied by OMIM]

**Other Designations** -

## Pathway

- [Neurotrophin signaling pathway](#)