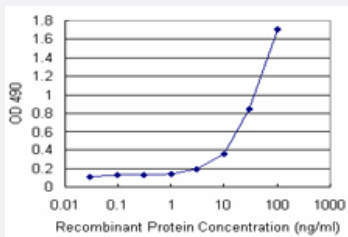


# ARHGDIA (Human) Matched Antibody Pair

Catalog # H00000396-AP21

Size 1 Set

## Applications



Sandwich ELISA detection sensitivity ranging from 3 ng/ml to 100 ng/ml.

## Specification

<b>Product Description</b>	This antibody pair set comes with a matched antibody pair to detect and quantify the protein level of human ARHGDIA.
<b>Reactivity</b>	Human
<b>Quality Control Testing</b>	Standard curve using recombinant protein ( H00000396-P01 ) as an analyte. Sandwich ELISA detection sensitivity ranging from 3 ng/ml to 100 ng/ml.
<b>Supplied Product</b>	Antibody pair set content: 1. Capture antibody: rabbit MaxPab® affinity purified polyclonal anti-ARHGDIA (100 ug) 2. Detection antibody: mouse purified polyclonal anti-ARHGDIA (20 ug) *Reagents are sufficient for at least 1-2 x 96 well plates using recommended protocols.
<b>Storage Instruction</b>	Store reagents of the antibody pair set at -20°C or lower. Please aliquot to avoid repeated freeze thaw cycle. Reagents should be returned to -20°C storage immediately after use.

## Applications

- ELISA Pair (Recombinant protein)

[Protocol Download](#)

## Gene Info — ARHGDIA

Entrez GeneID	<a href="#">396</a>
Gene Name	ARHGDIA
Gene Alias	GDIA1, MGC117248, RHOGDI, RHOGDI-1
Gene Description	Rho GDP dissociation inhibitor (GDI) alpha
Omim ID	<a href="#">601925</a>
Gene Ontology	<a href="#">Hyperlink</a>
Gene Summary	<p>Aplysia Ras-related homologs (ARHs), also called Rho genes, belong to the RAS gene superfamily encoding small guanine nucleotide exchange (GTP/GDP) factors. The ARH proteins may be kept in the inactive, GDP-bound state by interaction with GDP dissociation inhibitors, such as ARHGDIA (Leffers et al., 1993 [PubMed 8262133]).[supplied by OMIM]</p>
Other Designations	-

## Pathway

- [Neurotrophin signaling pathway](#)