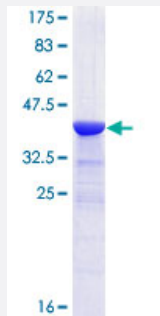


ARHGAP6 (Human) Recombinant Protein (Q01)

Catalog # H00000395-Q01

Size 25 ug, 10 ug

Applications



Specification

Product Description	Human ARHGAP6 partial ORF (NP_038286, 531 a.a. - 636 a.a.) recombinant protein with GST-tag at N-terminal.
Sequence	RHADDNISKDGGQEVGTGNKMTSLNLATIFGPNLLHKQKSSDKEFSVQSSARAEESTAIIVVQKMIE NYEALFMVPPDLQNEVLISLLETDPDVVDYLLRRKASQSS
Host	Wheat Germ (in vitro)
Theoretical MW (kDa)	37.4
Interspecies Antigen Sequence	Mouse (98)
Preparation Method	in vitro wheat germ expression system
Purification	Glutathione Sepharose 4 Fast Flow
Quality Control Testing	12.5% SDS-PAGE Stained with Coomassie Blue.
Storage Buffer	50 mM Tris-HCl, 10 mM reduced Glutathione, pH=8.0 in the elution buffer.
Storage Instruction	Store at -80°C. Aliquot to avoid repeated freezing and thawing.
Note	Best use within three months from the date of receipt of this protein.

Applications

- Enzyme-linked Immunoabsorbent Assay
- Western Blot (Recombinant protein)
- Antibody Production
- Protein Array

Gene Info — ARHGAP6

Entrez GeneID [395](#)

GeneBank Accession# [NM_013427](#)

Protein Accession# [NP_038286](#)

Gene Name ARHGAP6

Gene Alias RHOGAP6, RHOGAPX-1

Gene Description Rho GTPase activating protein 6

Omim ID [300118](#)

Gene Ontology [Hyperlink](#)

Gene Summary This gene encodes a member of the rhoGAP family of proteins which play a role in the regulation of actin polymerization at the plasma membrane during several cellular processes. This protein is thought to have two independent functions, one as a GTPase-activating protein with specificity for RhoA, and another as a cytoskeletal protein that promotes actin remodeling. Multiple alternatively spliced transcript variants encoding different isoforms have been found for this gene. [provided by RefSeq]

Other Designations OTTHUMP00000022913|OTTHUMP00000022915|OTTHUMP00000022916|OTTHUMP00000022918|Rho-type GTPase-activating protein RhoGAPX-1

Disease

- [Cardiovascular Diseases](#)
- [Diabetes Mellitus](#)

- [Edema](#)